

Safe Cities: Interventions against the recent community outbreak of Covid-19 in Lao PDR: Focusing on Quarantine, Isolation, protection shelter, Health Centres and communities at risk in Saravane, Savannakhet, and Champassak Provinces

**OUTPUT B1: REPORT ON PROVISION OF WASH FACILITIES/HARD INFRASTRUCTURE AND SERVICES,
OUTPUT B2: DEVELOPMENT AND DISSEMINATION OF IEC MATERIALS,
OUTPUT C1: REPORT ON STAKEHOLDERS' PROJECT COMPLETION MEETING**

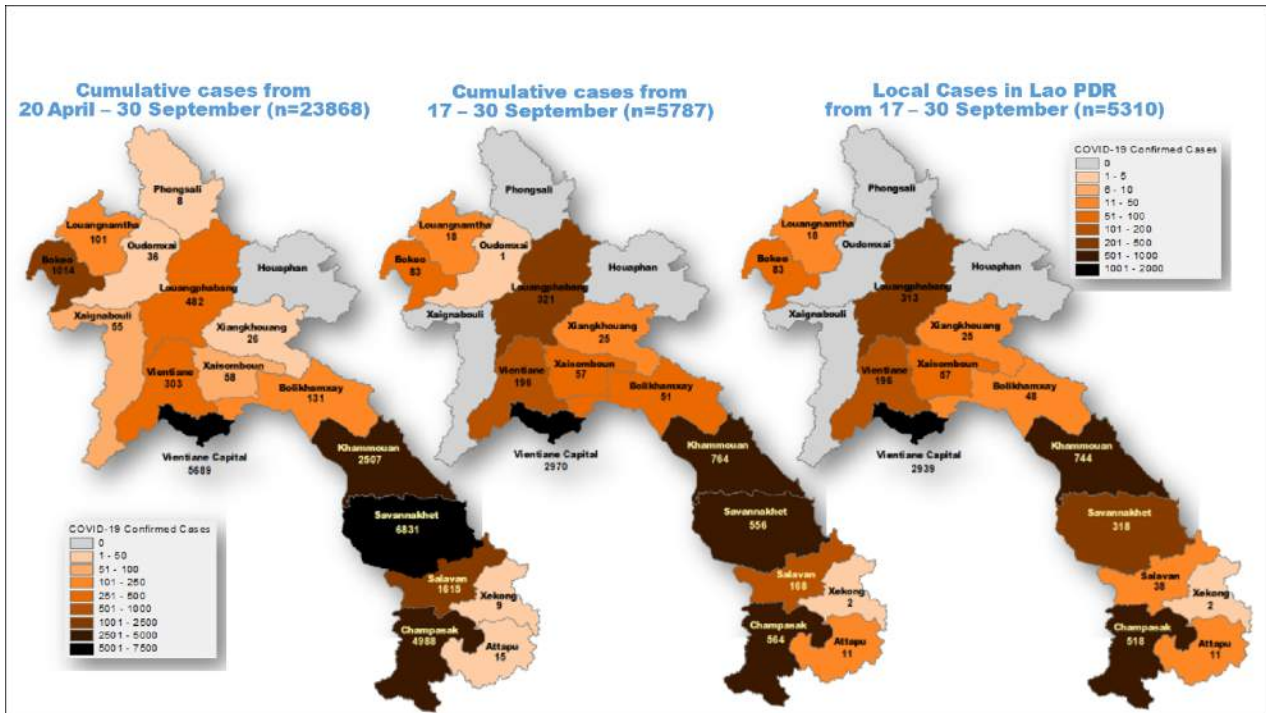
**AGREEMENT OF COOPERATION BETWEEN UN-HABITAT AND NPSE-SARAVANE
AOC22-014**



| TABLE OF CONTENT | Page |
|---|------|
| 1. PROJECT BACKGROUND | 3 |
| 2. PROJECT OBJECTIVES | 4 |
| 3. ACTIVITIES OBJECTIVES | 5 |
| 4 ACTIVITIES SCOPE | 5 |
| 4.1. CONDUCT A RAPID ASSESSMENT | 5 |
| 4.2. COORDINATION, PROVISION OF WASH INFRASTRUCTURE AND SERVICES (PROVISION OF WASH INFRASTRUCTURE AND SERVICES AND PROVISION OF IEC MATERIALS) | 6 |
| 4.3. MONITOR THE PROJECT PROGRESS AND RESULTS | 6 |
| A. HEALTH CENTER, NAPHO VILLAGE, SARAVANE DISTRICT | 8 |
| B. HEALTH CENTER, NONGBUA VILLAGE, SARAVANE DISTRICT | 10 |
| C. HEALTH CENTER, NAMOUNG VILLAGE, KONGXEDON DISTRICT, SARAVANE PROVINCE. | 12 |
| D. HEALTH CENTER, PHONG VILLAGE, KONGXEDON DISTRICT, SARAVANE PROVINCE. 15 | |
| E. HEALTH CENTER, PHORKHEM, LAONGAM DISTRICT | 17 |
| F. HEALTH CENTER, THA VILLAGE, NAKHONEPHENG DISTRICT, SARAVANE PROVINCE. 19 | |
| G. SAFE SHELTER FOR WOMEN AND CHILDREN CHAMPASAK PROVINCE | 23 |
| H. IMPROVEMENT OF PHYSICAL INFRASTRUCTURE OF FIELD HOSPITAL, SONGKHONE – COVID-19 ISOLATION CENTRE SAVANNAKHET PROVINCE. | 25 |
| I. ACTIVITIES’S PHOTOS | 26 |
| I.1 SARAVANE PROVINCE | 26 |
| I.1 SAVANNAKHET PROVINCE | 29 |
| APPENDIX: REPORT IN LAO | 32 |

1. PROJECT BACKGROUND

Over a year after the country managed the containment of the coronavirus remarkably well, the Government of Lao People’s Democratic Republic (PDR) imposed the second lockdown on 22 April 2021 due to the sudden onset of the community spread of COVID-19. As of 24 September 2021, Lao PDR had recorded a total of 21,080 cases with 16 deaths, 2 of which are maternal deaths. The caseload continues to increase since August 2021. As of late Sept, community transmission has been recorded in 10 provinces. The figure below shows the distribution of case numbers throughout the provinces.



SOURCE: WHO, SEPTEMBER 2021

Covid-19 has necessitated public health measures, including the use of designated quarantine and isolation facilities. The surge of cases since April 2021 has taxed the capacity of hospitals, health centres and, in particular, Quarantine Centres (QCs) that have received limited financial support from the central government due to the ad hoc structure that does not administratively fall under any single jurisdiction. With over 140,000 Lao migrants returning home as of July 2021, the risk of overcrowded QCs is real. Quarantine Facilities (QFs) concentrate on returning Lao migrants from neighbouring countries and have given rise to the rapid proliferation of quarantine facilities set up. While the situation is changing daily, as of 13 September, 7,237 people are isolated at 93 quarantine centres throughout the country, the vast majority of which are makeshift settlements. The first maternal death occurred in a 28-year-old returning female migrant. In addition to QFs, isolation facilities have been set up for the care and management of mild and asymptomatic cases of Covid-19. Cases which increase in severity are transferred to hospitals. There are three isolation facilities in Vientiane and more in the provinces.

There is a need to improve the conditions of communities at risk as well as of both QFs and isolation facilities in order to ensure the safety of those who are housed there. A pressing need is more Water, Sanitation and Hygiene (WASH) facilities and services. A recent update notes limited resources to operate safe isolation and quarantine facilities with needs including the incorporation of best practices for physical distancing, hygiene, WASH standards, protection and mental and psychosocial health needs of people in quarantine and safety/security of those in quarantine centres. There is also a concern about the disruption of health services, including sexual reproductive health services. The following figure shows the growing need on psychosocial support.



Linked to this, it is reported that some people are being advised to self-quarantine at home, and the imposition of restrictions for people to leave their homes during high rates of community transmissions puts women and girls at an increased risk of gender-based violence, sexual exploitation and other harmful practices in the mid to long terms such as an increase in school dropouts and early marriage. During the pandemic, indicative national data show higher rates of sexual and gender-based violence (SGBV) as a result of increased socio-economic frustrations and limited mobility due to quarantine and lockdowns. To ensure the protection and safety of women and girls at QFs and isolation facilities, gender-segregated and safe quarters, toilets, and washrooms are required, as well as sufficient lighting and security. Women and girls must also have access to essential supplies, information and services on GBV prevention and response. Short-term solutions must focus on response to and recovery from Covid-19, especially in Quarantine Facilities. These short-term solutions should lay the groundwork for future long-term solutions that assist the development of people-centred and gender-sensitive urban growth and planning.

The 2021 outbreak in Lao PDR came at a considerable cost where the country’s successful avoidance of COVID-19 during the first year of the pandemic was achieved in return for the collapse of the tourism industry devastating the foreign reserves to service its existing debts. While the Government and development partners are taking swift action to prevent the further spread of the virus, a serious outbreak would effectively wipe out the hard-won gains of the last year and could compound the country’s economic problems further.

2. PROJECT OBJECTIVES

The overall goal of this project was to safeguard the health, safety and well-being of people in QFs/isolation facilities/community centres, as well as communities at risk in Lao PDR, thereby improving the response to Covid-19 and the containment of the virus.

The project targeted QFs, Isolation Facilities, protection shelters, health facilities, and communities at risk as identified in cooperation with the Governments of Savannakhet, Saravane, and Champassak Provinces. Specific requests have been received regarding needs at facilities in some of these provinces and some provinces were dealing with high numbers of both imported and locally acquired cases, as well as high numbers of returnees. Facilities urgently needed WASH, improvement of facility structures, and health services including reproductive health and protection, and their users would have benefited from this project.

Component 2 of this project was based on the rapid response for improvement of gender-responsive WASH in erstwhile QFs/isolation facilities/community centres, public buildings and communities at risk. Physical improvements to QF/isolation facility/community centre structures would have further increased the safety, health, and liveability of the facilities. This component was to be implemented in 3 provinces: Savannakhet, Saravane, and Champassak.

3. ACTIVITIES OBJECTIVES

Rapid WASH assessment was one of the three activities listed in the project document. This activity was aimed at providing necessary information and guidance to relevant provincial authorities such as the physical area and locations of the target construction site design, materials, and prices as well as foreseeing potential challenges during project implementation. Furthermore, the results of rapid assessment was going to be used as a basis for the project discussion meeting among key stakeholders such as the provincial administration office, provincial department of Public Work and Transport, provincial NPSE, and provincial public health office. The reflection from the users, implementors, and decision makers during this meeting would have been used to maximize the benefits of the WASH facilities/hard infrastructure which was to be funded by the project.

4 ACTIVITIES SCOPE

UN-Habitat implemented Component 2 of the project “WASH facilities/hard infrastructure and physical improvements to QFs, isolation facilities, community centres and communities at risk” in 3 provinces: Savannakhet, Saravane, and Champassak Provinces. This component was the physical improvements to the liveability of gender-responsive WASH in QFs/isolation facilities/community centres and communities at risk with UN-Habitat’s rapid response.

UN-Habitat worked in partnership with NPSE- Saravane and, where required, the Department of Health (DoH) and the Department of Public Works and Transport (DPWT) on the assessment of community facilities, coordination, and provision of WASH infrastructure and Information, Education, and Communication (IEC) materials.

List of activities and output:

- 4.1. Conduct rapid assessment
- 4.2. Coordination, provision of WASH infrastructure and services (Provision of WASH infrastructure and services and Provision of IEC materials)
- 4.3. Monitor the project progress and results

4.1. CONDUCT A RAPID ASSESSMENT

| Activities | Outputs | Inputs |
|---------------------------------|---|--|
| A. Rapid WASH assessment | | |
| 1. Conduct rapid assessment | Output A1. Report on rapid WASH facilities/hard infrastructure assessment | NPSE Saravane, Savannakhet, Champassak, DoH, UN-Habitat, local authorities |

Timeline

| Activities | Months (2022) | | | | Months (2023) | | | | | Outputs | |
|---------------------------------|---------------|---|---|---|---------------|---|---|---|---|---------|--|
| | S | O | N | D | J | F | M | A | M | | J |
| A. Rapid WASH Assessment | | | | | | | | | | | |
| 1. Conduct a rapid assessment | | | | | | | | | | | Output A1. Report on rapid WASH facilities/ hard infrastructure assessment |

4.2. COORDINATION, PROVISION OF WASH INFRASTRUCTURE AND SERVICES (PROVISION OF WASH INFRASTRUCTURE AND SERVICES AND PROVISION OF IEC MATERIALS)

On 11 November 2022, NPSE Saravane Province set up the teams to construct the WASH facility/ infrastructure and service in 6 health centers in Saravane province as per the agreement, and the results of rapid assessment.

After more than three months conduct of construction NPSE Saravane had completed all the work on 25 January 2023, completed the dissemination of IEC materials and conducted the stakeholders’ meeting to inform all stakeholders of the completion of the scope of work agreed to the AOC. The detail is shown in the section of “4.3. Monitor the project progress and results”.

4.3. MONITOR THE PROJECT PROGRESS AND RESULTS OVERALL

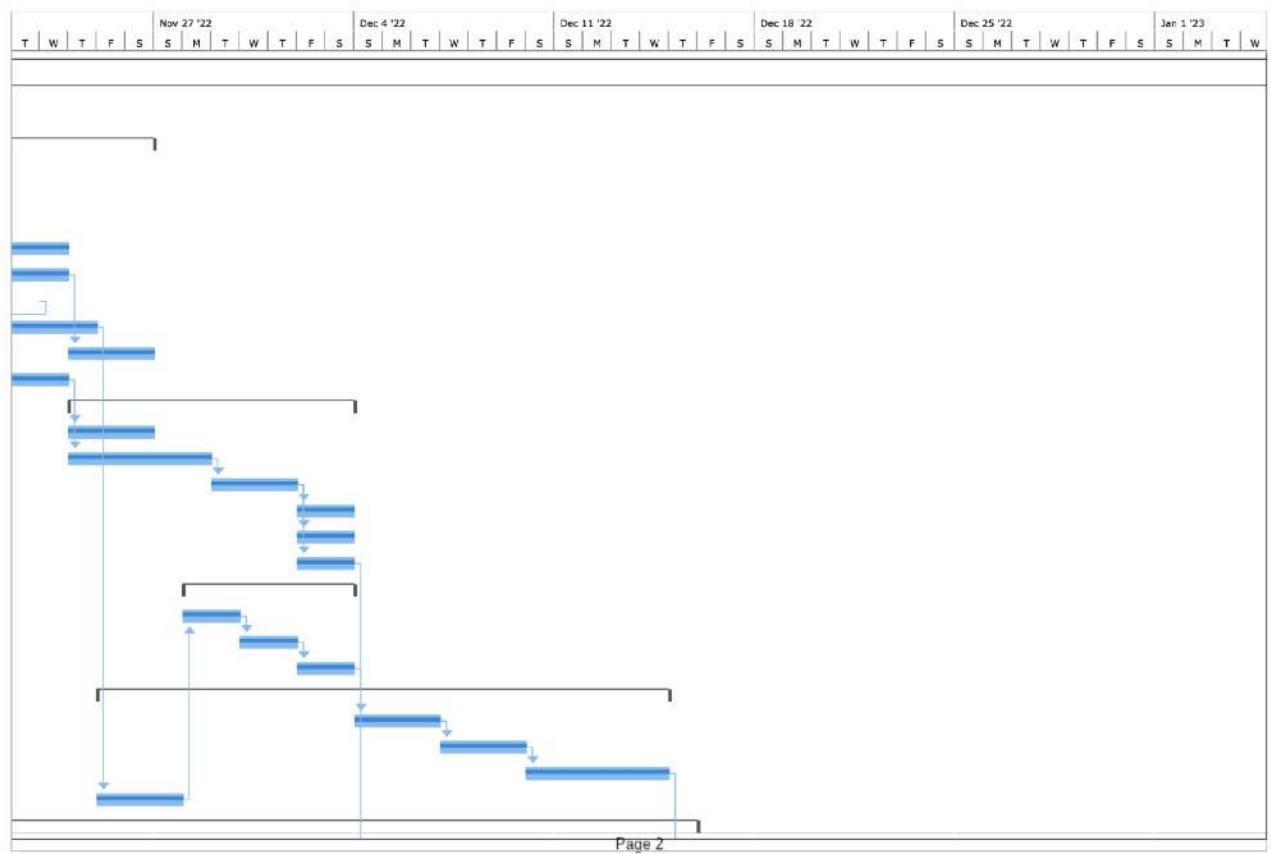
| | Task Name | % Complete | Duration | Start | Finish | |
|-----|---|------------|----------|----------------------|----------------------|--|
| 1 | ✓ Progress of project | 100% | 76 days? | Fri 11/11/22 8:00 A | Wed 1/25/23 5:00 P | |
| 2 | ✓ Health Center, Napho village, Saravane District | 100% | 69 days? | Fri 11/11/22 8:00 AM | Wed 1/18/23 5:00 PM | |
| 48 | ✓ Health Center, Nongbua Village, Saravane District | 100% | 41 days | Mon 11/14/22 8:00 AM | Sat 12/24/22 5:00 PM | |
| 83 | ✓ Health Center, Namoung village, Kongxedon District | 100% | 56 days | Tue 11/15/22 8:00 AM | Mon 1/9/23 5:00 PM | |
| 121 | ✓ Health Center, Phong village, Kongxedon District | 100% | 45 days | Mon 12/12/22 8:00 AM | Wed 1/25/23 5:00 PM | |
| 181 | ✓ Health Center, Phorkhem, Laongam District | 100% | 29 days | Sun 11/27/22 8:00 AM | Sun 12/25/22 5:00 PM | |
| 207 | ✓ Health Center, Tha Village, Nakhonepheng District | 100% | 59 days | Mon 11/28/22 8:00 AM | Wed 1/25/23 5:00 PM | |
| 285 | ✓ Construction – 0.4 kb network and install a 380v electric meter_Safe Shelter for women and children Champasak Province. | 100% | 14 days | Thu 1/5/23 8:00 AM | Wed 1/18/23 5:00 PM | |
| 301 | ✓ Water pipe installation at Safe Shelter for women and children Champasak Province. | 100% | 27 days | Wed 12/21/22 8:00 AM | Mon 1/16/23 5:00 PM | |
| 306 | ✓ Improvement of Physical infrastructure of Field Hospital, Songkhone – Covid-19 isolation center Savannakhet Province. | 100% | 19 days | Thu 12/22/22 8:00 AM | Mon 1/9/23 5:00 PM | |

Project: NPSE Work Progress
Date: Wed 12/5/23 4:34 PM

| | | | | |
|--------------------|--|-----------------------|--|--------------------|
| Task | | Inactive Summary | | External Tasks |
| Split | | Manual Task | | External Milestone |
| Milestone | | Duration-only | | Deadline |
| Summary | | Manual Summary Rollup | | Progress |
| Project Summary | | Manual Summary | | Manual Progress |
| Inactive Task | | Start-only | | |
| Inactive Milestone | | Finish-only | | |

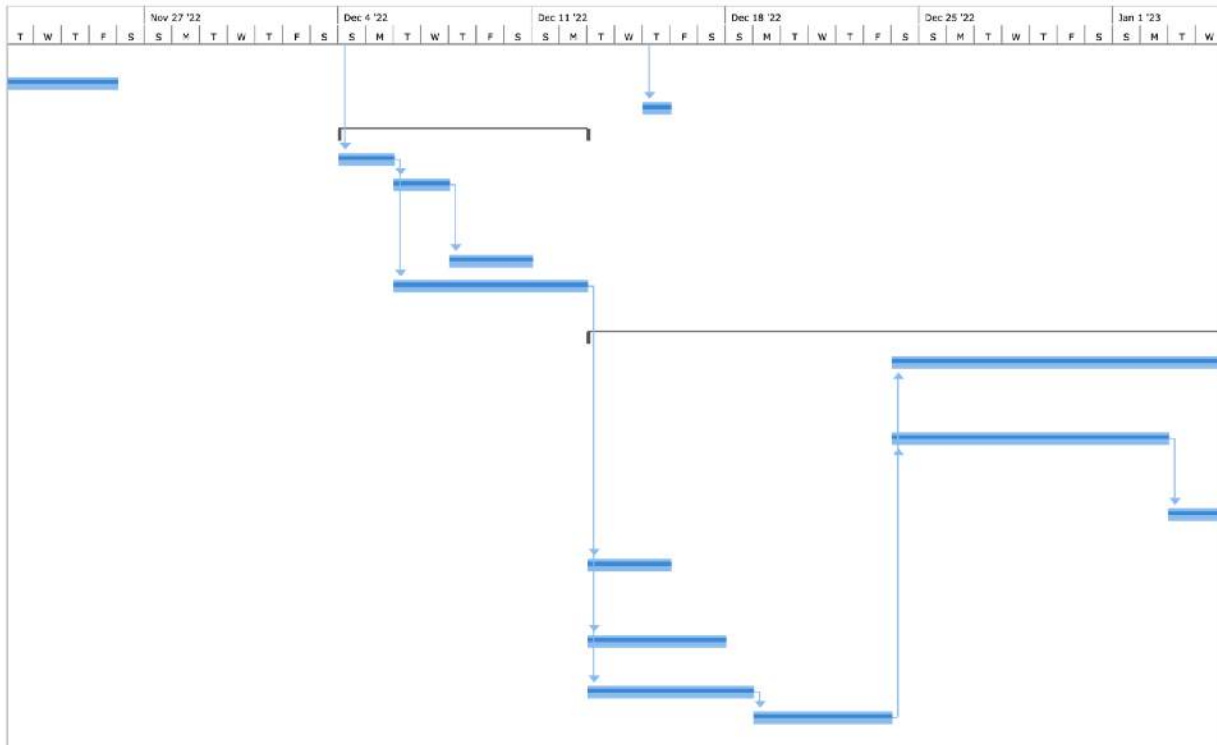
A. HEALTH CENTER, NAPHO VILLAGE, SARAVANE DISTRICT

| ID | Task Name | % Complete | Duration | Start | Finish |
|----|---|------------|----------|----------------------|----------------------|
| 1 | Progress of project | 100% | 76 days? | Fri 11/11/22 8:00 A | Wed 1/25/23 5:00 P |
| 2 | Health Center, Napho village, Saravane District | 100% | 69 days? | Fri 11/11/22 8:00 AM | Wed 1/18/23 5:00 PM |
| 3 | New pipe installation | 100% | 16 days | Fri 11/11/22 8:00 A | Sat 11/26/22 5:00 P |
| 4 | Pipe PVC DN 40 | 100% | 5 days | Fri 11/11/22 8:00 AM | Tue 11/15/22 5:00 PM |
| 5 | Pipe PVC DN 18 | 100% | 3 days | Wed 11/16/22 8:00 AM | Fri 11/18/22 5:00 PM |
| 6 | Tee PVC DN 40/40/40 | 100% | 5 days | Wed 11/16/22 8:00 AM | Sun 11/20/22 5:00 PM |
| 7 | Tee PVC DN 40/40/18 | 100% | 5 days | Sat 11/19/22 8:00 AM | Wed 11/23/22 5:00 PM |
| 8 | Tee PVC DN 18/18/18 | 100% | 5 days | Sat 11/19/22 8:00 AM | Wed 11/23/22 5:00 PM |
| 9 | Elbow90 PVC DN 18 | 100% | 3 days | Sat 11/19/22 8:00 AM | Mon 11/21/22 5:00 PM |
| 10 | Elbow90 Faucet PVC DN 18 | 100% | 3 days | Tue 11/22/22 8:00 AM | Thu 11/24/22 5:00 PM |
| 11 | Water Tap DN 18 | 100% | 3 days | Thu 11/24/22 8:00 AM | Sat 11/26/22 5:00 PM |
| 12 | water lock DN 40 | 100% | 2 days | Tue 11/22/22 8:00 AM | Wed 11/23/22 5:00 PM |
| 13 | Installment of wash basin | 100% | 10 days | Thu 11/24/22 8:00 A | Sat 12/3/22 5:00 PM |
| 14 | wash basin | 100% | 3 days | Thu 11/24/22 8:00 AM | Sat 11/26/22 5:00 PM |
| 15 | Pipe PVC DN 40 | 100% | 5 days | Thu 11/24/22 8:00 AM | Mon 11/28/22 5:00 PM |
| 16 | Elbow PVC DN 40 | 100% | 3 days | Tue 11/29/22 8:00 AM | Thu 12/1/22 5:00 PM |
| 17 | Tee PVC DN 18/18/18 | 100% | 2 days | Fri 12/2/22 8:00 AM | Sat 12/3/22 5:00 PM |
| 18 | Elbow90 PVC DN 18 | 100% | 2 days | Fri 12/2/22 8:00 AM | Sat 12/3/22 5:00 PM |
| 19 | Elbow90Faucet PVC DN 18 | 100% | 2 days | Fri 12/2/22 8:00 AM | Sat 12/3/22 5:00 PM |
| 20 | Electricity Works | 100% | 6 days | Mon 11/28/22 8:00 A | Sat 12/3/22 5:00 PM |
| 21 | Electricity wire 2x2.5 | 100% | 2 days | Mon 11/28/22 8:00 AM | Tue 11/29/22 5:00 PM |
| 22 | Electricity 2x1.5 | 100% | 2 days | Wed 11/30/22 8:00 AM | Thu 12/1/22 5:00 PM |
| 23 | Electricity 2x1 | 100% | 2 days | Fri 12/2/22 8:00 AM | Sat 12/3/22 5:00 PM |
| 24 | Control board | 100% | 20 days | Fri 11/25/22 8:00 A | Wed 12/14/22 5:00 |
| 25 | Plug 3 holes | 100% | 3 days | Sun 12/4/22 8:00 AM | Tue 12/6/22 5:00 PM |
| 26 | power switch | 100% | 3 days | Wed 12/7/22 8:00 AM | Fri 12/9/22 5:00 PM |
| 27 | Light | 100% | 5 days | Sat 12/10/22 8:00 AM | Wed 12/14/22 5:00 PM |
| 28 | Electricity wireway 2.5 | 100% | 3 days | Fri 11/25/22 8:00 AM | Sun 11/27/22 5:00 PM |
| 29 | Repair toilet | 100% | 27 days? | Sat 11/19/22 8:00 A | Thu 12/15/22 5:00 P |



| ID | Task Name | % Complete | Duration | Start | Finish | Nov 13 '22 | | | | | | | Nov 20 '22 | | | | | | |
|----|--|-------------|----------------|-----------------------------|-----------------------------|------------|---|---|---|---|---|---|------------|---|---|---|---|--|--|
| | | | | | | T | F | S | S | M | T | W | T | F | S | S | M | | |
| 30 | ✓ Pipe for drainage system | 100% | 2 days | Sat 11/19/22 8:00 AM | Sun 11/20/22 5:00 PM | | | | | | | | | | | | | | |
| 31 | ✓ Fix pipe system | 100% | 7 days | Sat 11/19/22 8:00 AM | Fri 11/25/22 5:00 PM | | | | | | | | | | | | | | |
| 32 | ✓ Clean and painting | 100% | 1 day? | Thu 12/15/22 8:00 AM | Thu 12/15/22 5:00 PM | | | | | | | | | | | | | | |
| 33 | ✓ Install water pump | 100% | 9 days | Sun 12/4/22 8:00 AM | Mon 12/12/22 5:00 P | | | | | | | | | | | | | | |
| 34 | ✓ Electricity wire 2x2.5 | 100% | 2 days | Sun 12/4/22 8:00 AM | Mon 12/5/22 5:00 PM | | | | | | | | | | | | | | |
| 35 | ✓ Electronic Control Box for Water Pump and automatic safety | 100% | 2 days | Tue 12/6/22 8:00 AM | Wed 12/7/22 5:00 PM | | | | | | | | | | | | | | |
| 36 | ✓ Pump 0.3-0.5KW | 100% | 3 days | Thu 12/8/22 8:00 AM | Sat 12/10/22 5:00 PM | | | | | | | | | | | | | | |
| 37 | ✓ Drill borehole for underground water 60m | 100% | 7 days | Tue 12/6/22 8:00 AM | Mon 12/12/22 5:00 PM | | | | | | | | | | | | | | |
| 38 | ✓ Install a high tank | 100% | 37 days | Tue 12/13/22 8:00 A | Wed 1/18/23 5:00 P | | | | | | | | | | | | | | |
| 39 | ✓ Steel tube fabricated for overhead tank water storages 75x75x1.8mm | 100% | 14 days | Sat 12/24/22 8:00 AM | Fri 1/6/23 5:00 PM | | | | | | | | | | | | | | |
| 40 | ✓ Steel tube fabricated for overhead tank water storages 40x80x1.4mm | 100% | 10 days | Sat 12/24/22 8:00 AM | Mon 1/2/23 5:00 PM | | | | | | | | | | | | | | |
| 41 | ✓ Equal Angles Steel 40x40x1.8mm | 100% | 5 days | Tue 1/3/23 8:00 AM | Sat 1/7/23 5:00 PM | | | | | | | | | | | | | | |
| 42 | ✓ Steel tube fabricated 2.5x40x1.4mm | 100% | 3 days | Tue 12/13/22 8:00 AM | Thu 12/15/22 5:00 PM | | | | | | | | | | | | | | |
| 43 | ✓ stainless steel 1000 litre | 100% | 5 days | Sun 1/8/23 8:00 AM | Thu 1/12/23 5:00 PM | | | | | | | | | | | | | | |
| 44 | ✓ Color for steel | 100% | 5 days | Tue 12/13/22 8:00 AM | Sat 12/17/22 5:00 PM | | | | | | | | | | | | | | |
| 45 | ✓ Hiring welder/painter | 100% | 6 days | Fri 1/13/23 8:00 AM | Wed 1/18/23 5:00 PM | | | | | | | | | | | | | | |
| 46 | ✓ Lay cement + Labours | 100% | 6 days | Tue 12/13/22 8:00 AM | Sun 12/18/22 5:00 PM | | | | | | | | | | | | | | |
| 47 | ✓ Level measurement and land filling | 100% | 5 days | Mon 12/19/22 8:00 AM | Fri 12/23/22 5:00 PM | | | | | | | | | | | | | | |
| 48 | ✓ Health Center, Nongbua Village, Saravane District | 100% | 41 days | Mon 11/14/22 8:00 AM | Sat 12/24/22 5:00 PM | | | | | | | | | | | | | | |

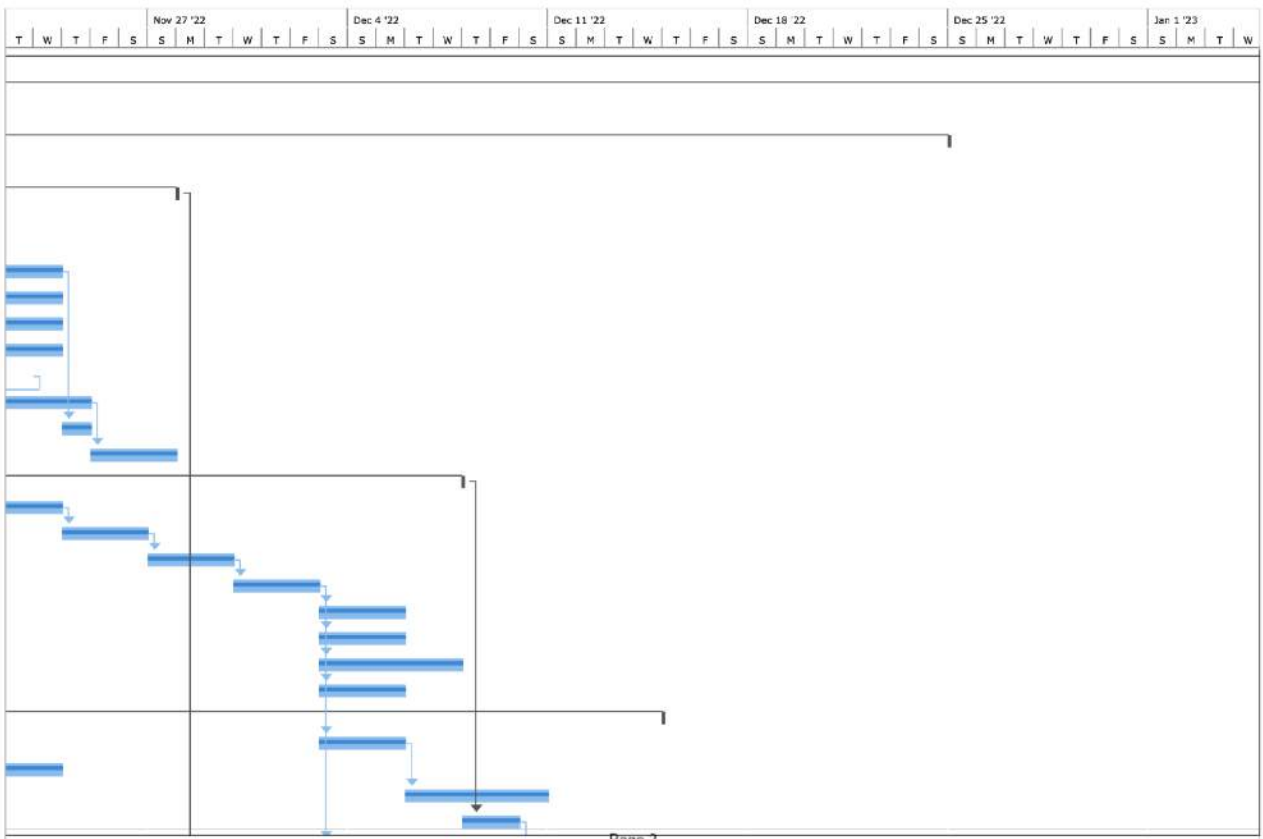
Page 4



B. HEALTH CENTER, NONGBUA VILLAGE, SARAVANE DISTRICT

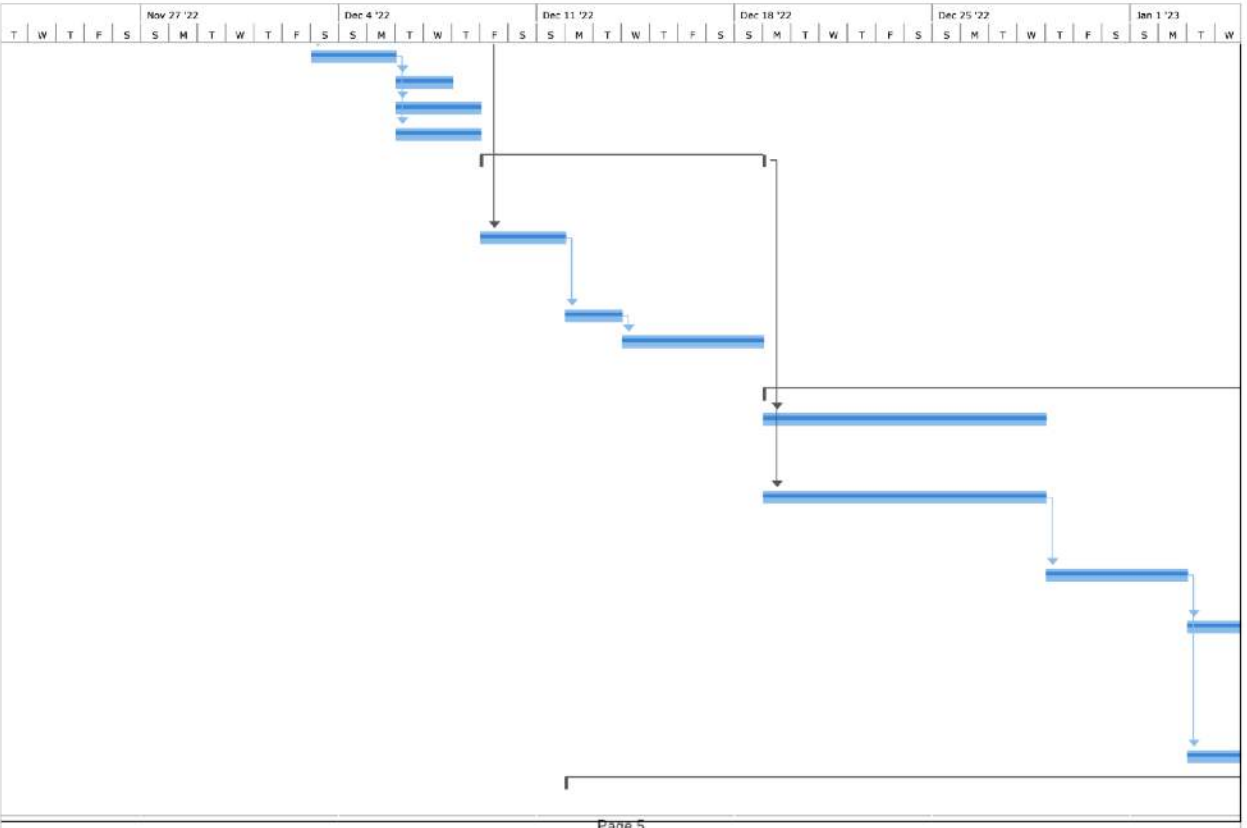
| | Task Name | % Complete | Duration | Start | Finish | |
|----|--|------------|----------|----------------------|----------------------|--|
| 1 | ✓ Progress of project | 100% | 76 days? | Fri 11/11/22 8:00 A | Wed 1/25/23 5:00 P | |
| 2 | ✓ Health Center, Napho village, Saravane District | 100% | 69 days? | Fri 11/11/22 8:00 AM | Wed 1/18/23 5:00 PM | |
| 48 | ✓ Health Center, Nongbua Village, Saravane District | 100% | 41 days | Mon 11/14/22 8:00 AM | Sat 12/24/22 5:00 PM | |
| 49 | ✓ New stallment of water pipe | 100% | 14 days | Mon 11/14/22 8:00 A | Sun 11/27/22 5:00 P | |
| 50 | ✓ Pipe PVC DN 40 | 100% | 5 days | Mon 11/14/22 8:00 AM | Fri 11/18/22 5:00 PM | |
| 51 | ✓ Pipe PVC DN 18 | 100% | 5 days | Mon 11/14/22 8:00 AM | Fri 11/18/22 5:00 PM | |
| 52 | ✓ Tee PVC DN 40/40/40 | 100% | 5 days | Sat 11/19/22 8:00 AM | Wed 11/23/22 5:00 PM | |
| 53 | ✓ Tee PVC DN 40/40/18 | 100% | 5 days | Sat 11/19/22 8:00 AM | Wed 11/23/22 5:00 PM | |
| 54 | ✓ Tee PVC DN 18/18/18 | 100% | 5 days | Sat 11/19/22 8:00 AM | Wed 11/23/22 5:00 PM | |
| 55 | ✓ Elbow90 PVC DN 18 | 100% | 5 days | Sat 11/19/22 8:00 AM | Wed 11/23/22 5:00 PM | |
| 56 | ✓ Elbow90faucet PVC DN 18 | 100% | 3 days | Sat 11/19/22 8:00 AM | Mon 11/21/22 5:00 PM | |
| 57 | ✓ Water Tap DN 18 | 100% | 3 days | Tue 11/22/22 8:00 AM | Thu 11/24/22 5:00 PM | |
| 58 | ✓ water lock DN 40 | 100% | 1 day | Thu 11/24/22 8:00 AM | Thu 11/24/22 5:00 PM | |
| 59 | ✓ Install Wash Basin | 100% | 3 days | Fri 11/25/22 8:00 AM | Sun 11/27/22 5:00 PM | |
| 60 | ✓ Electricity Works | 100% | 19 days | Sat 11/19/22 8:00 A | Wed 12/7/22 5:00 P | |
| 61 | ✓ Electric wire 2x2.5 | 100% | 5 days | Sat 11/19/22 8:00 AM | Wed 11/23/22 5:00 PM | |
| 62 | ✓ Electricity wire 2x1.5 | 100% | 3 days | Thu 11/24/22 8:00 AM | Sat 11/26/22 5:00 PM | |
| 63 | ✓ Electricity wire 2x1 | 100% | 3 days | Sun 11/27/22 8:00 AM | Tue 11/29/22 5:00 PM | |
| 64 | ✓ Control panel board | 100% | 3 days | Wed 11/30/22 8:00 AM | Fri 12/2/22 5:00 PM | |
| 65 | ✓ Plug 3 holes | 100% | 3 days | Sat 12/3/22 8:00 AM | Mon 12/5/22 5:00 PM | |
| 66 | ✓ power switch | 100% | 3 days | Sat 12/3/22 8:00 AM | Mon 12/5/22 5:00 PM | |
| 67 | ✓ Light | 100% | 5 days | Sat 12/3/22 8:00 AM | Wed 12/7/22 5:00 PM | |
| 68 | ✓ Electricity wire 2.5 | 100% | 3 days | Sat 12/3/22 8:00 AM | Mon 12/5/22 5:00 PM | |
| 69 | ✓ Repair Toilet | 100% | 26 days | Sat 11/19/22 8:00 A | Wed 12/14/22 5:00 | |
| 70 | ✓ Pipe for Ventilation | 100% | 3 days | Sat 12/3/22 8:00 AM | Mon 12/5/22 5:00 PM | |
| 71 | ✓ Fix pipe system | 100% | 5 days | Sat 11/19/22 8:00 AM | Wed 11/23/22 5:00 PM | |
| 72 | ✓ Clean and coloring | 100% | 5 days | Tue 12/6/22 8:00 AM | Sat 12/10/22 5:00 PM | |
| 73 | ✓ Install water pump | 100% | 2 days | Thu 12/8/22 8:00 AM | Fri 12/9/22 5:00 PM | |

Page 1

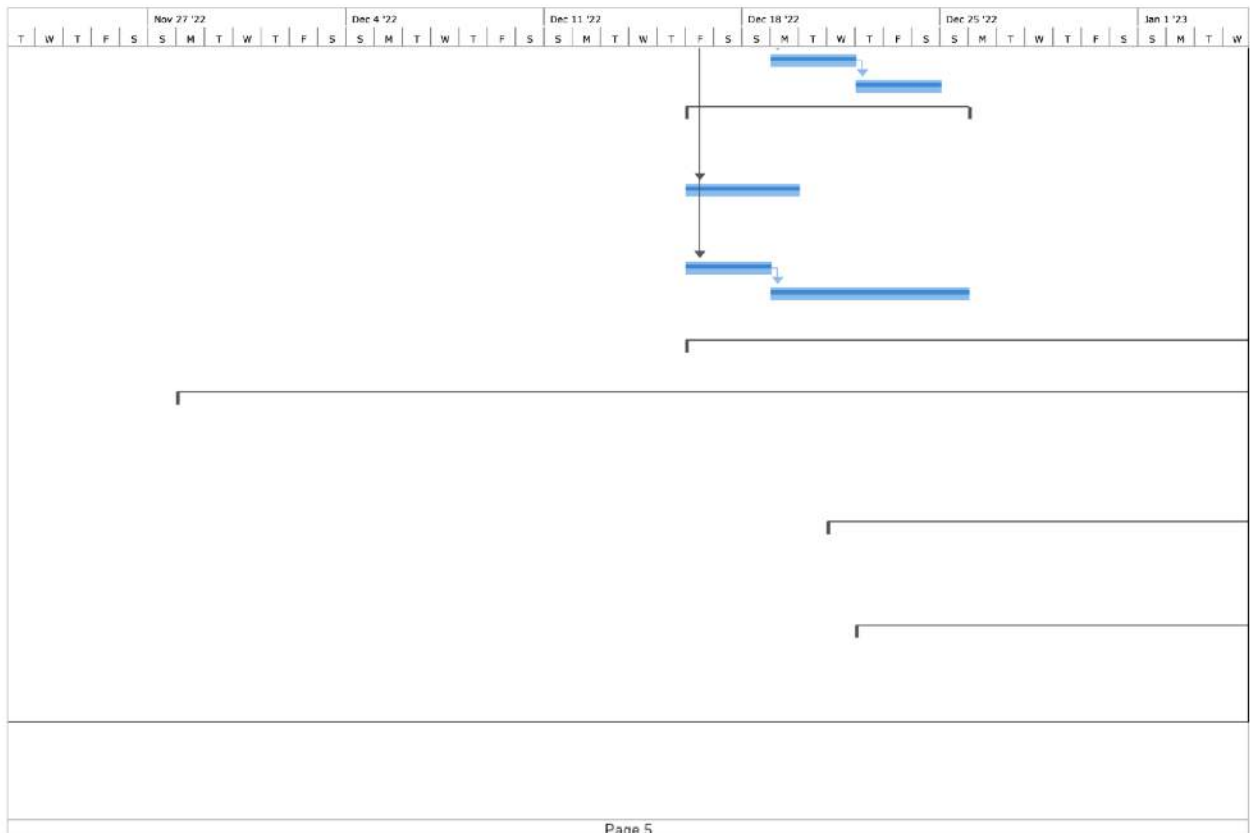


Page 2

| | Task Name | % Complete | Duration | Start | Finish | Nov 13 '22 | | | | | | | Nov 20 '22 | | | | | | | | | | | | | | | | | |
|-----|---|-------------|-----------------|-----------------------------|-----------------------------|------------|---|---|---|---|---|---|------------|---|---|---|---|---|---|---|---|---|---|---|---|---|---|---|---|--|
| | | | | | | T | F | S | S | M | T | W | T | F | S | S | M | T | W | T | F | S | S | M | T | W | T | F | S | |
| 106 | ✓ Plug 3 holes | 100% | 3 days | Sat 12/3/22 8:00 AM | Mon 12/5/22 5:00 PM | | | | | | | | | | | | | | | | | | | | | | | | | |
| 107 | ✓ power switch | 100% | 2 days | Tue 12/6/22 8:00 AM | Wed 12/7/22 5:00 PM | | | | | | | | | | | | | | | | | | | | | | | | | |
| 108 | ✓ Light | 100% | 3 days | Tue 12/6/22 8:00 AM | Thu 12/8/22 5:00 PM | | | | | | | | | | | | | | | | | | | | | | | | | |
| 109 | ✓ Electricity wire way 2.5 | 100% | 3 days | Tue 12/6/22 8:00 AM | Thu 12/8/22 5:00 PM | | | | | | | | | | | | | | | | | | | | | | | | | |
| 110 | ✓ Install waterpump and Clean and develop groundwater well | 100% | 10 days | Fri 12/9/22 8:00 AM | Sun 12/18/22 5:00 PM | | | | | | | | | | | | | | | | | | | | | | | | | |
| 111 | ✓ Electronic Control Box for Water Pump and automatic safety | 100% | 3 days | Fri 12/9/22 8:00 AM | Sun 12/11/22 5:00 PM | | | | | | | | | | | | | | | | | | | | | | | | | |
| 112 | ✓ Pump 0.3-0.5KW | 100% | 2 days | Mon 12/12/22 8:00 AM | Tue 12/13/22 5:00 PM | | | | | | | | | | | | | | | | | | | | | | | | | |
| 113 | ✓ Clean and develop groundwater well | 100% | 5 days | Wed 12/14/22 8:00 AM | Sun 12/18/22 5:00 PM | | | | | | | | | | | | | | | | | | | | | | | | | |
| 114 | ✓ Install a high tank | 100% | 22 days | Mon 12/19/22 8:00 A | Mon 1/9/23 5:00 PM | | | | | | | | | | | | | | | | | | | | | | | | | |
| 115 | ✓ Steel fabricated structure for overhead water tank 75x75x1.8mm | 100% | 10 days | Mon 12/19/22 8:00 AM | Wed 12/28/22 5:00 PM | | | | | | | | | | | | | | | | | | | | | | | | | |
| 116 | ✓ Steel fabricated structure for overhead water tank 40x80x1.4mm | 100% | 10 days | Mon 12/19/22 8:00 AM | Wed 12/28/22 5:00 PM | | | | | | | | | | | | | | | | | | | | | | | | | |
| 117 | ✓ Equal Angles Steel 40x40x1.8mm | 100% | 5 days | Thu 12/29/22 8:00 AM | Mon 1/2/23 5:00 PM | | | | | | | | | | | | | | | | | | | | | | | | | |
| 118 | ✓ Steel fabricated structure for overhead water tank 2.5x40x1.4mm | 100% | 5 days | Tue 1/3/23 8:00 AM | Sat 1/7/23 5:00 PM | | | | | | | | | | | | | | | | | | | | | | | | | |
| 119 | ✓ stainless steel water tank 1000Litre | 100% | 2 days | Sun 1/8/23 8:00 AM | Mon 1/9/23 5:00 PM | | | | | | | | | | | | | | | | | | | | | | | | | |
| 120 | ✓ Steel Painting | 100% | 5 days | Tue 1/3/23 8:00 AM | Sat 1/7/23 5:00 PM | | | | | | | | | | | | | | | | | | | | | | | | | |
| 121 | ✓ Health Center, Phong village, Kongxedon District | 100% | 45 days? | Mon 12/12/22 8:00 AM | Wed 1/25/23 5:00 PM | | | | | | | | | | | | | | | | | | | | | | | | | |

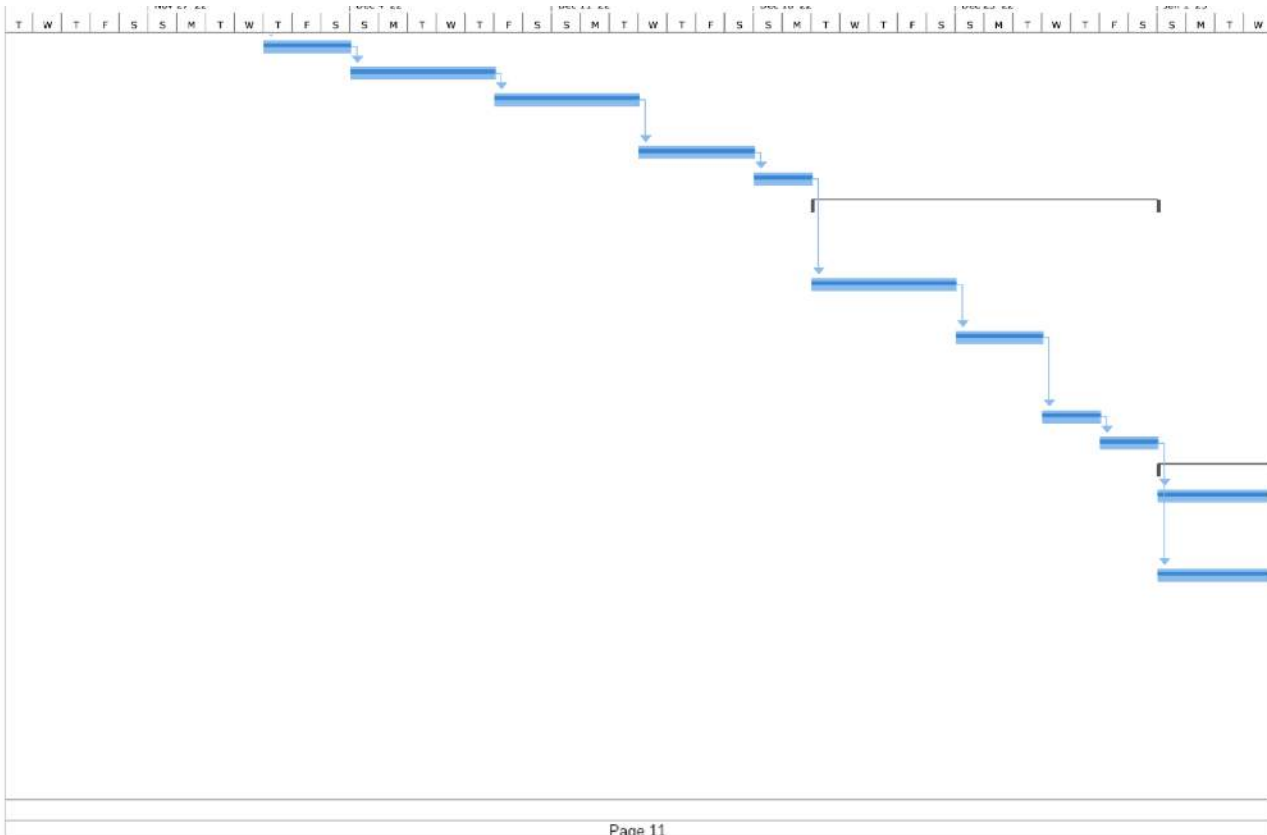


| | Task Name | % Complete | Duration | Start | Finish | Nov 13 '22 | | | | | | | Nov 20 '22 | | | | | |
|-----|--|-------------|-----------------|-----------------------------|-----------------------------|------------|---|---|---|---|---|---|------------|---|---|---|---|--|
| | | | | | | T | F | S | S | M | T | W | T | F | S | S | M | |
| 201 | ✓ Fix pipe system | 100% | 3 days | Mon 12/19/22 8:00 AM | Wed 12/21/22 5:00 PM | | | | | | | | | | | | | |
| 202 | ✓ Clean and coloring | 100% | 3 days | Thu 12/22/22 8:00 AM | Sat 12/24/22 5:00 PM | | | | | | | | | | | | | |
| 203 | ✓ Install waterpump and Clean and develop groundwater well | 100% | 10 days | Fri 12/16/22 8:00 AM | Sun 12/25/22 5:00 PM | | | | | | | | | | | | | |
| 204 | ✓ Electronic Control Box for Water Pump and automatic safety | 100% | 4 days | Fri 12/16/22 8:00 AM | Mon 12/19/22 5:00 PM | | | | | | | | | | | | | |
| 205 | ✓ Pump 0.3-0.5KW | 100% | 3 days | Fri 12/16/22 8:00 AM | Sun 12/18/22 5:00 PM | | | | | | | | | | | | | |
| 206 | ✓ Clean and develop groundwater well | 100% | 7 days | Mon 12/19/22 8:00 AM | Sun 12/25/22 5:00 PM | | | | | | | | | | | | | |
| 207 | ✓ Health Center, Thaban Village, Nakhonepheng District | 100% | 29 days | Fri 12/16/22 8:00 AM | Fri 1/13/23 5:00 PM | | | | | | | | | | | | | |
| 238 | ✓ Health Center, Tha Village, Nakhonepheng District | 100% | 59 days? | Mon 11/28/22 8:00 AM | Wed 1/25/23 5:00 PM | | | | | | | | | | | | | |
| 323 | ✓ Construction - 0.4 kb network and install a 380v electric meter | 100% | 14 days | Thu 1/5/23 8:00 AM | Wed 1/18/23 5:00 PM | | | | | | | | | | | | | |
| 339 | ✓ Water pipe installation at Women and Children Centre in Houaxae, Bachiang, Champasack Provinc | 100% | 27 days | Wed 12/21/22 8:00 AM | Mon 1/16/23 5:00 PM | | | | | | | | | | | | | |
| 344 | ✓ Improvement of Physical infrastructure of Field Hospital, Songkhone - Covid-19 isolation center Savannakhet Province. | 100% | 19 days | Thu 12/22/22 8:00 AM | Mon 1/9/23 5:00 PM | | | | | | | | | | | | | |



| ID | Task Name | % Complete | Duration | Start | Finish | Nov 13 '22 | | | | | | | Nov 20 '22 | | | | | | | |
|-----|---|-------------|----------------|-----------------------------|-----------------------------|------------|---|---|---|---|---|---|------------|---|---|---|---|---|--|--|
| | | | | | | T | F | S | S | M | T | W | T | F | S | S | M | T | | |
| 269 | ✓ Floor Concrete | 100% | 3 days | Thu 12/1/22 8:00 AM | Sat 12/3/22 5:00 PM | | | | | | | | | | | | | | | |
| 270 | ✓ Brick Laying 20cm | 100% | 5 days | Sun 12/4/22 8:00 AM | Thu 12/8/22 5:00 PM | | | | | | | | | | | | | | | |
| 271 | ✓ Wall between room thick - 10cm | 100% | 5 days | Fri 12/9/22 8:00 AM | Tue 12/13/22 5:00 PM | | | | | | | | | | | | | | | |
| 272 | ✓ concrete on closing cover | 100% | 4 days | Wed 12/14/22 8:00 AM | Sat 12/17/22 5:00 PM | | | | | | | | | | | | | | | |
| 273 | ✓ apply cement on the wall | 100% | 2 days | Sun 12/18/22 8:00 AM | Mon 12/19/22 5:00 PM | | | | | | | | | | | | | | | |
| 274 | ✓ Install water pump Clean and develop groundwater well | 100% | 12 days | Tue 12/20/22 8:00 AM | Sat 12/31/22 5:00 PM | | | | | | | | | | | | | | | |
| 275 | ✓ Electricity wire 2x2.5 | 100% | 5 days | Tue 12/20/22 8:00 AM | Sat 12/24/22 5:00 PM | | | | | | | | | | | | | | | |
| 276 | ✓ Electronic Control Box for Water Pump and automatic safety | 100% | 3 days | Sun 12/25/22 8:00 AM | Tue 12/27/22 5:00 PM | | | | | | | | | | | | | | | |
| 277 | ✓ Pump 0.3-0.5KW | 100% | 2 days | Wed 12/28/22 8:00 AM | Thu 12/29/22 5:00 PM | | | | | | | | | | | | | | | |
| 278 | ✓ underground water 40 - 60 m | 100% | 2 days | Fri 12/30/22 8:00 AM | Sat 12/31/22 5:00 PM | | | | | | | | | | | | | | | |
| 279 | ✓ Install a high tank | 100% | 22 days | Sun 1/1/23 8:00 AM | Sun 1/22/23 5:00 PM | | | | | | | | | | | | | | | |
| 280 | ✓ Steel tube fabricated for structure of overhead water tank 75x75x1.8mm | 100% | 15 days | Sun 1/1/23 8:00 AM | Sun 1/15/23 5:00 PM | | | | | | | | | | | | | | | |
| 281 | ✓ Steel tube fabricated for structure of overhead water tank 40x80x1.4mm | 100% | 8 days | Sun 1/1/23 8:00 AM | Sun 1/8/23 5:00 PM | | | | | | | | | | | | | | | |
| 282 | ✓ Equal Angles Steel 40x40x1.8mm | 100% | 3 days | Mon 1/9/23 8:00 AM | Wed 1/11/23 5:00 PM | | | | | | | | | | | | | | | |
| 283 | ✓ Steel tube fabricated for structure of overhead water tank 2.5x40x1.4mm | 100% | 8 days | Thu 1/12/23 8:00 AM | Thu 1/19/23 5:00 PM | | | | | | | | | | | | | | | |
| 284 | ✓ stainless steel 1000Litre | 100% | 3 days | Fri 1/20/23 8:00 AM | Sun 1/22/23 5:00 PM | | | | | | | | | | | | | | | |

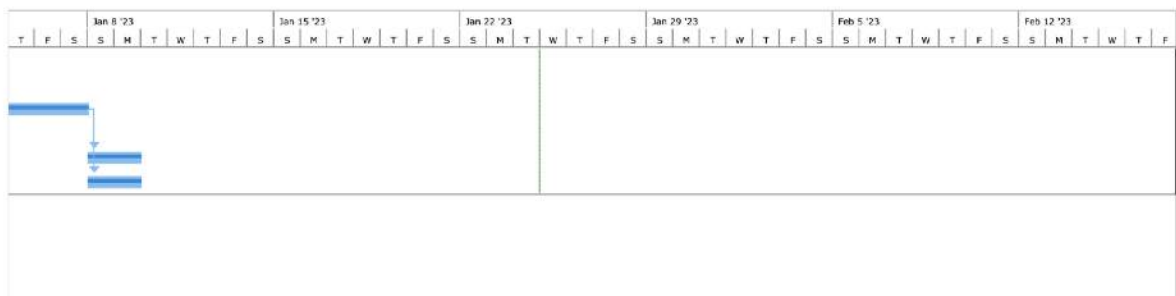
Page 10



Page 11

H. IMPROVEMENT OF PHYSICAL INFRASTRUCTURE OF FIELD HOSPITAL, SONGKHONE – COVID-19 ISOLATION CENTRE SAVANNAKHET PROVINCE.

| ID | Task Name | % Complete | Duration | Start | Finish | Nov 13 '22 | | | | | | | Nov 20 '22 | | | | | | |
|-----|--|------------|----------|----------------------|--------------------|------------|---|---|---|---|---|---|------------|---|---|---|---|---|--|
| | | | | | | T | F | S | S | M | T | W | T | F | S | S | M | T | |
| 309 | ✓ Painting primer layer internal and external wall | 100% | 5 days | Thu 12/29/22 8:00 AM | Mon 1/2/23 5:00 PM | | | | | | | | | | | | | | |
| 310 | ✓ Painting the second layer internal and external wall | 100% | 5 days | Tue 1/3/23 8:00 AM | Sat 1/7/23 5:00 PM | | | | | | | | | | | | | | |
| 311 | ✓ Painting skirting external wall | 100% | 2 days | Sun 1/8/23 8:00 AM | Mon 1/9/23 5:00 PM | | | | | | | | | | | | | | |
| 312 | ✓ Painting skirting internal wall | 100% | 2 days | Sun 1/8/23 8:00 AM | Mon 1/9/23 5:00 PM | | | | | | | | | | | | | | |



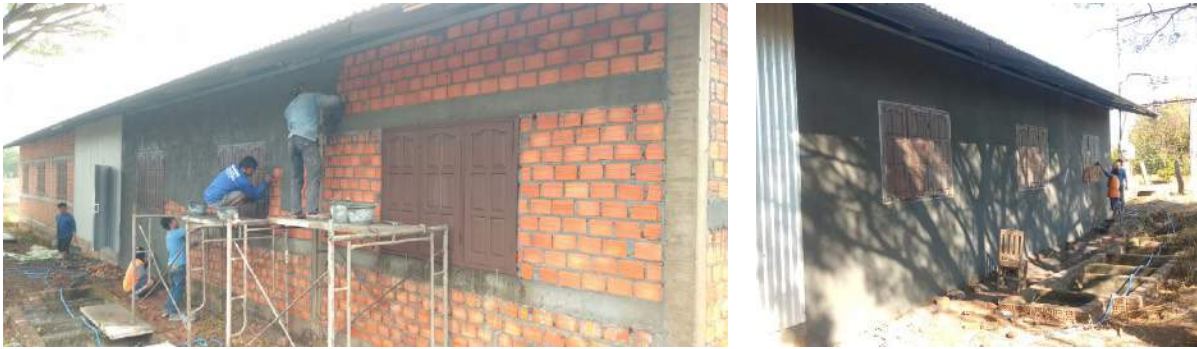
I. ACTIVITIES'S PHOTOS
I.1 SARAVANE PROVINCE







I.1 SAVANNAKHET PROVINCE







ອົງຕາມສັນຍາຮ່ວມມື ລະຫວ່າງ UN-HABITAT ແລະ NPSE-SARAVANE
AOC22-014

**Output B1: ບົດລາຍງານຜົນສໍາເລັດ
ປຸ້ນປົວ-ສູນກັນກອງ ສຸຂະອະນາໄມ ແລະ ການປັບປຸງລະບົບນໍ້າ Cov
-19 ແຂວງສາລະວັນ**



ອົງຄະການປັບປຸງນໍ້າ ປະເທດ ສາລະວັນ
25 2023 ເດືອນ ມັງກອນ

ສາລະບານ

ລາຍງານໂດຍຫຍໍ້.....3

1. ຄວາມເປັນມາຂອງໂຄງການ
3

5. ຂອບເຂດຂອງໂຄງການ
6

5. ຄວາມຄືບໜ້າການຈດຕັ້ງປະຕິບັດ.....7

ລາຍງານໂດຍຫຍໍ້

1. ຄວາມເປັນມາຂອງໂຄງການ

- ອົງການສະຫະປະຊາຊາດດ້ານເຄຫາສະຖານປະຈຳ ສປປ ລາວ (Un-Habitat), ໃນເບື້ອງຕົ້ນໄດ້ສ້າງຕັ້ງຂຶ້ນເປັນສະຫະປະຊາຊາດການຕັ້ງຖິ່ນຖານຂອງປະຊາຊາດໂດຍມະຕິຂອງສະມັດຊາໃຫຍ່ຂອງສະຫະປະຊາຊາດ 32/162 ວັນທີ 19 ທັນວາ 1977 ຫຼັງຈາກນັ້ນໄດ້ຫັນເປັນອົງການຍ່ອຍຂອງກອງປະຊຸມໃຫຍ່ ແລະ ໂດຍມະຕິ ຂອງ ສະຫະປະຊາຊາດ 56/206 ລົງວັນທີ 21 ທັນວາ 2001, ໂດຍມີສໍານັກງານໃຫຍ່ຢູ່ປະເທດເຄັນຍາ ,ນະຄອນຫຼວງໄນໂຣບີ.
- ລັດວິສາຫະກິດນໍ້າປະປາ ແຂວງສາລະວັນ ສ້າງຕັ້ງ ໃນປີ 1978 ເປັນລັດວິສາຫະກິດ ປີ ແລະ 1990, ເຊິ່ງເປັນຄູ່ສັນຍາຮ່ວມມືກັບອົງການສະຫະປະຊາຊາດດ້ານເຄຫາສະຖານ(Un-Habitat) ຜ່ານມາມີ 5 ປີ :ໂຄງການຄື 2008-10 ໄດ້ຮັບການຄວາມຊ່ວຍເຫຼືອ ໂຄງການສ້ອມໂຮງງານ ແລະ ຂະຫຍາຍທີ່ແຈກຈ່າຍ 5 ບ້ານ ເມືອງຄົງເຊໂດນ ສະໜັບສະໜູນໂດຍກອງທຶນອົງການແມ່ນໍ້າຂອງ(MEK-WATSAN), ປີ 2014-16 ກໍ່ສ້າງພື້ນຖານໂຄງລ່າງລະບົບນໍ້າ 18 ສະໜ້ວຍ ໂດຍ-ບ້ານເມືອງຕະໂອ້ຍ ການສະໜັບສະໜູນ ທຶນຈາກອີຟັດ(IFAD), ປີ 2018-23 ສືບຕໍ່ກໍ່ສ້າງພື້ນຖານໂຄງລ່າງລະບົບນໍ້າ 61 ສະໜັບສະໜູນໂດຍກອງທຶນການພັດທະນາລະບົບໂຄງລ່າງ ,ບ້ານເມືອງຕະໂອ້ຍ ແລະ ສະໜ້ວຍການສະໜອງນໍ້າ ໃຫ້ທຶນທານກັບການປັບຕົວເຂົ້າກັບສະພາບອາກາດ ແລະ ໄພພິບັດທີ່ມີຢູ່ແຂວງ ”ໃນຖິ່ນຖານຊົນນະບົດ ແລະ ຕົວເມືອງຂອງ ສປປ ລາວ ,ຄວາມສ່ຽງຫລາຍທີ່ສຸດສາລະວັນ (ADAPTATION FUND) ມີ ;ຍ້ອນແຕ່ລະໂຄງການໄດ້ຈັດຕັ້ງປະຕິບັດສໍາເລັດຊ້ວງໃນການຕ້ານ ແລະ ສະກັດກັ້ນພະຍາດໂຄວິດ ,ຄວາມເຊື່ອໝັ້ນໄວ້ວາງໃຈ ຂອງອົງການດັ່ງກ່າວ-19 ຈິ່ງໄດ້ສົມທົບເກັບກໍາຂໍ້ມູນ ພື້ນຖານໂຄງລ່າງລະບົບນໍ້າ ແລະ ສຸຂະອະນາໄມ ຂອງສູນຕ່າງໆ ຈາກພະແນກສາທາລະນະສກແຂວງສາລະວັນ ແລະ ໄດ້ເຮັດໜັງສືສະເໜີຂໍການຊ່ວຍເຫຼືອ ໄປຍັງອົງການ UN-Habitat ດັ່ງກ່າວ ເພື່ອພິຈາລະນາ ຈັດຫາ ແລະ ຈິ່ງໄດ້ຮັບແຫຼ່ງທຶນ.

2. ຈຸດປະສົງ

ໂດຍຜ່ານການສະໜອງ ຄວາມປອດໄພ ແລະ ສະຫວັດດີການຂອງປະຊາຊົນ ,ເພື່ອປົກປ້ອງສຸຂະພາບ ແມ່ນສິ່ງອໍານວຍຄວາມສະດວກລະບົບນໍ້າ ແລະ ສຸຂະອະນາໄມ ບັນດາ ໂຮງໝໍນ້ອຍ 6 ຈຸດສຸມ ຂອງແຂວງສາລະວັນ(WASH) ການສະໜອງວັດສະດຸ ແລະ IEC

3. ສັນຍາຮ່ວມມືກັນມີ 3 ອົງປະກອບດັ່ງນີ້:

- ອົງປະກອບທີ 1: ການສໍາຫຼວດທາງດ້ານວິສະວະ ,ແມ່ນການຈັດກອງປະຊຸມເລີ່ມຕົ້ນຂອງຜູ້ມີສ່ວນຮ່ວມກໍາ ແລະ ການອອກແບບປະເມີນລາຄາລະອຽດ WASH
- ອົງປະກອບທີ 2: ປັບປຸງ-ກໍ່ສ້າງ WASH ການສະໜອງວັດສະດຸ ແລະ IEC
- ອົງປະກອບທີ 3: ຈັດກອງປະຊຸມສໍາເລັດໂຄງການຂອງພາກສ່ວນ ;ການຕິດຕາມ ກວດກາ ແລະ ປະເມີນຜົນ ແລະ ແລກປ່ຽນບົດຮຽນ ເຜີຍແຜ່ ຜົນສໍາເລັດ ແລະ ກ່ຽວຂ້ອງເພື່ອປົກສາຫາລື.

4. ທີ່ຕັ້ງຂອງໂຄງການ

ທ່າງຈາກນະຄອນຫຼວງວຽງຈັນ ປະມານ ,ແຂວງສາລະວັນ ຕັ້ງຢູ່ພາກໄຕ້ຂອງ ສປປ ລາວ 694 ມິເນື້ອທີ່ ,ກມປະມານ ທັງໝົດ 10,691 ກມ², ໃນນີ້ ເນື້ອທີ່ເປັນພູດອຍ ປະມານ 40%, ທີ່ເປັນທົ່ງພຽງ ປະມານ 40% ແລະ ເນື້ອທີ່ເປັນພູພຽງ ປະມານ 20%. ໃນປີ 2021 ທົ່ວແຂວງ ມີປະຊາກອນທັງໝົດ 426,000 ປະຊາກອນຍິງ) ,ຄົນ

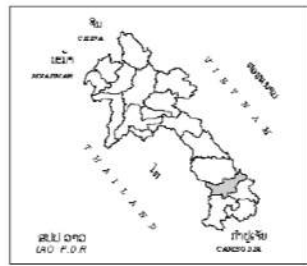
201,106 ເທົ່າກັບ (ຄົນ 67,505 ມີ ແລະ ຄົວເຮືອນ 588 ແລະ ພະແນກແຜນການ ,ສະຖິຕິ ຫ້ອງການ) ບ້ານ ການລົງທຶນ ແຂວງສາລະວັນ 2020), ປະມານ ປະຊາກອນ ຄວາມໜາແໜ້ນຂອງ ສະເລ່ຍ 37.01 ກມ/ຄົນ². ປະຊາກອນພາຍໃນແຂວງ ປະກອບດ້ວຍ 10 ເຜົ່າລາວ :ຊົນເຜົ່າ ຄື 55.78%, ກະຕາງ 17.6%, ສ່ວຍ 7.52 % , ປະໂກະ 4.4%, ລະເວນ 5.54%, ຕະໂອ້ຍ 3.95%, ຜູ້ໄທ 1.5%, ແງະ 1.31%, ກະຕູ 1.35% ອາລັກ ແລະ 1.26 %

ແຂວງສາລະວັນ ປະກອບດ້ວຍ 8 ,ວາປີ ,ລະຄອນເພັງ ,ຄົງເຊໂດນ ,ເລົ່າງາມ ,ສາລະວັນ ເມືອງ :ເມືອງຄື ດັ່ງລຸ່ມນີ້ ຊຶ່ງມີເຂດແດນ ສະໜ້ວຍ ແລະ ຕະໂອ້ຍ ,ຕຸ້ມລານ:

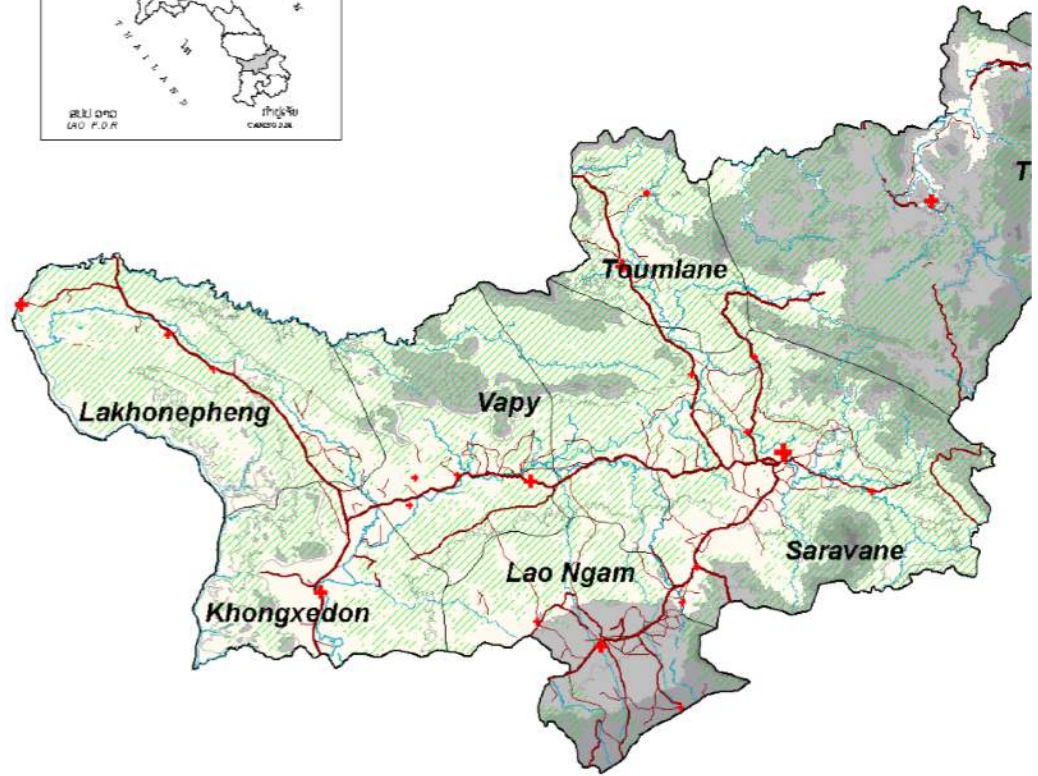
- ທິດເໜືອ ຕິດກັບ ແຂວງສະຫວັນນະເຂດ
- ທິດໃຕ້ ຕິດກັບ ແຂວງຈໍາປາສັກ
- ຫວຽດນາມ .ທິດຕາເວັນອອກ ຕິດກັບ ແຂວງເຊກອງ ແລະ ສສ
- ທິດຕາເວັນຕົກ ຕິດກັບ ລາຊະອານາຈັກໄທ

ໃນແຂວງ ຍັງມີດ່ານຊາຍແດນເຊື່ອມຕໍ່ ກັບປະເທດເພື່ອນບ້ານ ທັງໝົດ 3 ດ່ານ :ໜຶ່ງແຫ່ງເປັນດ່ານສາກົນຄື ;ແຫ່ງ ແລະ ຫວຽດນາມ .ສສ ທີ່ເຊື່ອມຕໍ່ກັບປະເທດ ລະໂລ 02 ຮົງເວີນ ເມືອງສະ-ດ່ານໂກດ່າຍ :ເປັນທ້ອງຖິ່ນ ຄື ດ່ານ ທີ່ເຊື່ອມຕໍ່ກັບ ລາດຊະ ຫວຽດນາມ ແລະ ດ່ານປາກຕາພານ ເມືອງລະຄອນເພັງ .ສສ ໜ້ວຍ ທີ່ເຊື່ອມຕໍ່ກັບປະເທດ ອານາຈັກໄທ

ແຜນທີ່ ຈຸດທີ່ຕັ້ງຂອງໂຄງການ



SARAVANE PROVINCE (14) MAP
ແຜນທີ່ ແຂວງສາລະວັນ



© World Health Organization, Lao PDR

0 100 KM

5. ຂອບເຂດຂອງໂຄງການ

ໂດຍການການສະກັດກັ້ນການແຜ່ລະບາດຂອງ :ເຂດເປົ້າໝາຍໂຄງການ ສ້າງໃຫ້ເປັນເມືອງທີ່ປອດໄພ Covid-19 ໃນ ໃນເມື່ອບໍ່ດົນມານີ້ ;ລາວ PDR; ແລະ ສຸກສາລາ ,ການປົກປ້ອງທີ່ພັກອາໄສ ,ການແຍກດ່ຽວ ,ສຸມໃສ່ການກັ່ນກອງ ສະຫວັນນະເຂດ ແລະຈຳປາສັກ ,ຊຸມຊົນທີ່ມີຄວາມສ່ຽງຂອງຊຸມຊົນຢູ່ແຂວງສາລະວັນ

- ແຂວງສາລະວັນ

ການປັບປຸງ(WASH)ໃນ 6 ສະຖານທີ່ຄື:

1. ແລະ ບ້ານນາໂພ ເມືອງສາລະວັນ ຢູ່ຈຸດສຸມບ້ານໜອງບົວນ້ອຍ
2. ເມືອງເລົ່າງາມ ຢູ່ໂຮງໝໍນ້ອຍ ບ້ານພໍ່ເຂັມ
3. ບ້ານປິ່ງ ແລະ ເມືອງຄົງເຊ ໂດນຢູ່ໂຮງໝໍນ້ອຍບ້ານນາມ່ວງ
4. ບ້ານທ່າ ເມືອງລະຄອຍເພັງ ຢູ່ໂຮງໝໍນ້ອຍ

6. ຜູ້ໄດ້ຜົນປະໂຫຍດຂອງໂຄງການ:

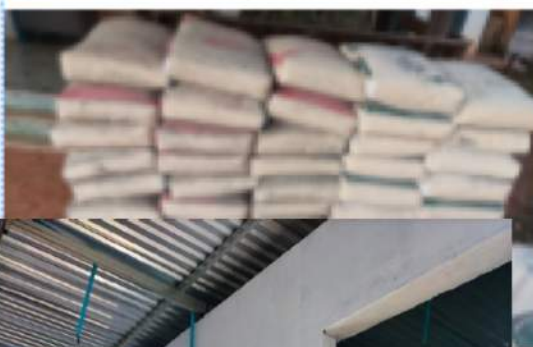
ຜູ້ທີ່ກຳລັງເຂົ້າໄປໃນປະເທດຫຼືຜູ້ທີ່ມີຄວາມສ່ຽງຫຼືຕິດເຊື້ອ :ຜູ້ໄດ້ຮັບຜົນປະໂຫຍດໂດຍກົງ Covid-19 ການຊ່ວຍເຫຼືອທີ່ຈະຖືກສະຫນອງໃຫ້ໃນສິ່ງອ່ານວຍ ,ດັ່ງທີ່ໄດ້ອະທິບາຍໄວ້ຂ້າງເທິງ .ຜູ້ທີ່ຢູ່ໃນສູນແຍກດ່ຽວ ແລະ ຜູ້ທີ່ຕິດເຊື້ອ ອາຄານສາທາລະນະທີ່ຖືກນຳໃຊ້ເພື່ອຮອງຮັບຜູ້ທີ່ກັບຄືນສູ່ປະເທດ ແລະ / ສູນຊຸມຊົນ / ຄວາມສະດວກ COVID-19 ໃນຈຳນວນທັງຫມົດ .ມີຄວາມສ່ຽງ ຫຼື, 6 ສະຖານທີ່ຈະຮອງຮັບປະມານ 324 ຄົນຕໍ່ຮອບການກັກ ສິ່ງອ່ານວຍຄວາມສະດວກເຫຼົ່ານີ້ຈະມີ ເນື່ອງຈາກວ່າ ອາຄານເຫຼົ່ານີ້ ແມ່ນສາທາລະນະໃນໄລຍະຍາວ .ແຍກດ່ຽວ/ກັ້ນ ເພື່ອຈຸດປະສົງ ຜູ້ໄດ້ຮັບຜົນປະໂຫຍດໂດຍກົງເພີ່ມເຕີມເມື່ອພວກເຂົາຢຸດເຊົາການນຳໃຊ້ Covid 19. ຜູ້ໃຫ້ບໍລິການ ຈາກບັນດາກະຊວງຕ່າງໆຈະໄດ້ຮັບຜົນປະໂຫຍດໂດຍກົງຈາກການສ້າງຂີດຄວາມສາມາດຮອງຮັບຜູ້ທີ່ກັບຄືນສູ່ ຜູ້ທີ່ຕິດເຊື້ອ ປະເທດ ແລະ COVID-19 ,ອຳນາດການປົກຄອງທ້ອງຖິ່ນ:ຜູ້ໄດ້ຮັບຜົນປະໂຫຍດທາງອ້ອມ ແລະ ແລະ ທ້ອງຖິ່ນອື່ນໆທີ່ກ່ຽວຂ້ອງ ແມ່ຍິງ.

| ລະຫັດ | | ຊື່ ບ້ານ | ຈາກຫ້ອງ ວ່າການ ມີມອງ(Km) | ຈຳ ນວນຄົວ ເຮືອນ ທັງໝົດ | ຈຳ ນວນ ຄອບຄົວ | ຈຳ ນວນພົນລະເມືອງ | |
|-------|------|------------------|--------------------------|------------------------|---------------|------------------|-------|
| ເມືອງ | ບ້ານ | | | | | ລວມ | ຍິງ |
| 1 | 2 | 3 | 6 | 8 | 9 | 10 | 11 |
| 07 | 091 | ບ້ານ ພໍ່ເຂັມ | 25 | 417 | 417 | 1,925 | 956 |
| 06 | 050 | ນາມ່ວງ | 12 | 313 | 362 | 1,771 | 901 |
| 06 | 039 | ປິ່ງ | 19 | 153 | 182 | 998 | 513 |
| 01 | 150 | ນາໂພໃຫຍ່ | 34 | 122 | 71 | 1,408 | 744 |
| 01 | 094 | ໜອງບົວນ້ອຍ | 38 | 203 | 89 | 1,117 | 568 |
| 04 | 033 | ບ້ານ ທາຄົນຊຸມຊົວ | 30 | 154 | 154 | 865 | 415 |
| | | | | 1,370 | 1,284 | 8,094 | 4,108 |

5. ຄວາມຄືບໜ້າການຈດຕັ້ງປະຕິບັດ

| ລ/ດ | ລາຍການ | Effective period of works (days) | 2022 | | 2023 | | ມູນຄ່າຕາມຈັດໜ້າ | ມູນຄ່າປະຕິບັດໄດ້ | ຈັດເປັນປີໃຊ້ນ |
|------------|---|----------------------------------|----------|---------|------|--------------------|--------------------|------------------|---------------|
| | | | Months | | | | | | |
| | | | December | January | | | | | |
| A | ປັບປຸງໂຮງໝໍ້ນອນຈຸດສູນ ເມືອງສາລະວັນ | | | | | 178,656,000 | 178,656,000 | 100% | |
| 3.1 | ໂຮງໝໍ້ນອນນາໄພ | | | | | 88,184,000 | 88,184,000 | 100% | |
| I | ຄົ້ນຄ້ວາໄພ | 1 | | ■ | | 2,810,000 | 2,810,000 | 100% | |
| II | ໄດ້ຕັ້ງອາງລາງີມ | 1 | | ■ | | 1,704,000 | 1,704,000 | 100% | |
| III | ວຽກຄົ້ນພົບເຂົ້າຫ້ອງກວດພະຍາດ | 2 | | ■ | | 7,050,000 | 7,050,000 | 100% | |
| IV | ສອມແປງຫ້ອງນໍາ | 2 | | ■ | | 2,100,000 | 2,100,000 | 100% | |
| V | ຈະບາດານໃຫມ່ປິດ ແລະ ໄດ້ຕັ້ງໄປມຸກຕໍ່ນໍາບາດານ | 3 | | ■ | | 36,257,000 | 36,257,000 | 100% | |
| VI | ໄດ້ຕັ້ງອາງສູງ (ລາຍລະອຽດຜ່ານໃບງຸດາມແບບ) | 10 | | ■ | | 38,263,000 | 38,263,000 | 100% | |
| 3.2 | ໂຮງໝໍ້ນອນຫອງນິວ | | | | | 90,472,000 | 90,472,000 | 100% | |
| I | ຈະບາດານໃຫມ່ປິດ ແລະ ໄດ້ຕັ້ງໄປມຸກຕໍ່ນໍາບາດານ | 3 | | ■ | | 36,257,000 | 36,257,000 | 100% | |
| II | ໄດ້ຕັ້ງໄປມຸກຕໍ່ນໍາບາດານແລະພັດທະນານໍາບາດານເປົ່າແລະອານາໄມ | 2 | | ■ | | 15,952,000 | 15,952,000 | | |
| III | ໄດ້ຕັ້ງອາງສູງ (ລາຍລະອຽດຜ່ານໃບງຸດາມແບບ) | 10 | | ■ | | 38,263,000 | 38,263,000 | | |
| B | ປັບປຸງໂຮງໝໍ້ນອນຈຸດສູນ ເມືອງຄົງເຊໂດນ | | | | | 250,867,357 | 250,867,357 | 100% | |
| 4.1 | ໂຮງໝໍ້ນອນບໍານານວງ | | | | | 27,511,000 | 27,511,000 | 100% | |
| I | ຄົ້ນຄ້ວາໄພ | | | ■ | | 2,150,000 | 2,150,000 | 100% | |
| II | ໄດ້ຕັ້ງອາງລາງີມ | | | ■ | | 1,704,000 | 1,704,000 | 100% | |
| III | ວຽກຄົ້ນພົບເຂົ້າຫ້ອງກວດພະຍາດ | | | ■ | | 5,800,000 | 5,800,000 | 100% | |
| IV | ສອມແປງຫ້ອງນໍາ | | | ■ | | 2,100,000 | 2,100,000 | 100% | |
| V | ໄດ້ຕັ້ງໄປມຸກຕໍ່ນໍາບາດານແລະພັດທະນານໍາບາດານເປົ່າແລະອານາໄມ | | | ■ | | 15,757,000 | 15,757,000 | 100% | |
| 4.2 | ໂຮງໝໍ້ນອນບໍານານິງ | | | | | 223,356,357 | 223,356,357 | 100% | |
| I | ຄົ້ນຄ້ວາໄພ | | | | | 2,390,000 | 2,390,000 | 100% | |
| II | ໄດ້ຕັ້ງອາງລາງີມ | | | | | 3,252,000 | 3,252,000 | 100% | |
| III | ວຽກຄົ້ນພົບເຂົ້າຫ້ອງກວດພະຍາດ | | | | | 6,200,000 | 6,200,000 | 100% | |
| IV | ຫ້ອງນໍາ ຂະໜາດ: 3.00 x 4.80 m, 2 ຫ້ອງສວມ, 2 ຫ້ອງອານນໍາ | | | | | 136,994,357 | 136,994,357 | 100% | |
| V | ຈະບາດານໃຫມ່ປິດ ແລະ ໄດ້ຕັ້ງໄປມຸກຕໍ່ນໍາບາດານ | | | | | 36,257,000 | 36,257,000 | 100% | |
| VI | ໄດ້ຕັ້ງອາງສູງ | 10 | | | | 38,263,000 | 38,263,000 | 100% | |
| C | ປັບປຸງໂຮງໝໍ້ນອນຈຸດສູນ ເມືອງໂລງກາມ | | | | | 21,007,000 | 21,007,000 | 100% | |
| 5.1 | ໂຮງໝໍ້ນອນບໍານານນ້ຳຂຸມ | | | | | 21,007,000 | 21,007,000 | | |
| I | ຄົ້ນຄ້ວາໄພ | 1 | | ■ | | 3,150,000 | 3,150,000 | | |
| III | ສອມແປງວັດຖຸບ | 1 | | ■ | | 2,100,000 | 2,100,000 | | |
| V | ໄດ້ຕັ້ງໄປມຸກຕໍ່ນໍາບາດານແລະພັດທະນານໍາບາດານເປົ່າແລະອານາໄມ | | | | | 15,757,000 | 15,757,000 | 100% | |
| D | ປັບປຸງໂຮງໝໍ້ນອນຈຸດສູນ ເມືອງນະຄອນເພັງ | | | | | | | | |
| 6.1 | ໂຮງໝໍ້ນອນບໍານານກາ | | | | | 1209,357 | 1209,357 | 100% | |
| I | ຫ້ອງນໍາ ຂະໜາດ: 3.00 x 4.80 m, 2 ຫ້ອງສວມ, 2 ຫ້ອງອານນໍາ | 30 | | | | 136,994,357 | 136,994,357 | 100% | |
| II | ໄດ້ຕັ້ງໄປມຸກຕໍ່ນໍາບາດານແລະພັດທະນານໍາບາດານເປົ່າແລະອານາໄມ | 3 | | ■ | | 15,952,000 | 15,952,000 | 100% | |
| III | ໄດ້ຕັ້ງອາງສູງ | 10 | | | | 38,263,000 | 38,263,000 | 100% | |
| | | | | | | 641,739,713 | 641,739,713 | 100% | |

ອ່າງສູງ-ພັດທະນາອະນາໄມບໍ່ບາດານ ກໍ່ສ້າງຫ້ອງນໍາ, ຮູບພາບການເຄື່ອນໄຫວຊື່ເຈາະ





ສາທາລະນະລັດ ປະຊາທິປະໄຕ ປະຊາຊົນລາວ
ສັນຕິພາບ ເອກະລາດ ປະຊາທິປະໄຕ ເອກະພາບ ວັດທະນາຖາວອນ

ແຂວງສາລະວັນ

ພະແນກ ໂຍທາທິການ ແລະ ຂົນສົ່ງ

ລັດວິສາຫະກິດນໍ້າປະປາ

ໂທ/ແຟັກ: 034 212021 / 211069

ເລກທີ...../ນປປ.ສວ

ວັນທີ...../...../ . . .

ໃບປະເມີນລາຄາ 01

ບັບບຸງໂຮງໝໍ້ນ້ອຍຈຸດສຸມ ເມືອງສາລະວັນ

| ລ/ດ | ລາຍການ | ຫົວໜ່ວຍ | ບໍລິມາດ | ລາຄາ(ກີບ) | ລວມລາຄາ(ກີບ) | ໝຫ |
|------------|---|---------|---------|-----------|-------------------|----|
| 3.1 | ໂຮງໝໍ້ນ້ອຍນາໄພ(I+II+III+IV+V+VI) | | | | 88,184,000 | |
| <i>I</i> | <i>ເດີນທໍ່ນໍ້າໃໝ່</i> | | | | 2,810,000 | |
| 1 | ທໍ່ PVC DN 40 | ແມັດ | 100 | 15,000 | 1,500,000 | |
| 2 | ທໍ່ PVC DN 18 | ແມັດ | 100 | 5,000 | 500,000 | |
| 3 | ກາວ 1 ກິໂລ | ກິໂລ | 1 | 150,000 | 150,000 | |
| 4 | ສາມຕາ PVC DN 40/40/40 | ແມັດ | 1 | 20,000 | 20,000 | |
| 5 | ສາມຕາ PVC DN 40/40/18 | ອັນ | 4 | 20,000 | 80,000 | |
| 6 | ສາມຕາ PVC DN 18/18/18 | ອັນ | 5 | 6,000 | 30,000 | |
| 7 | ຂໍ້ງໍ 90 PVC DN 18 | ອັນ | 25 | 6,000 | 150,000 | |
| 8 | ຂໍ້ງໍ 90ກຽວໃນ PVC DN 18 | ອັນ | 5 | 6,000 | 30,000 | |
| 9 | ກ້ອກນໍ້າ DN 18 | ອັນ | 5 | 60,000 | 300,000 | |
| 10 | ປະຕູນໍ້າ ຢາງ DN 40 | ອັນ | 1 | 50,000 | 50,000 | |
| <i>II</i> | <i>ຕິດຕັ້ງອ່າງລ້າງມື</i> | | | | 1,704,000 | |
| 1 | ອ່າງລ້າງມື | | 2 | 600,000 | 1,200,000 | |
| 2 | ທໍ່ PVC DN 40 | ແມັດ | 20 | 15,000 | 300,000 | |
| 3 | ຂໍ້ງໍ PVC DN 40 | ອັນ | 8 | 15,000 | 120,000 | |
| 4 | ສາມຕາ PVC DN 18/18/18 | ອັນ | 2 | 6,000 | 12,000 | |
| 5 | ຂໍ້ງໍ 90 PVC DN 18 | ອັນ | 10 | 6,000 | 60,000 | |
| 6 | ຂໍ້ງໍ 90ກຽວໃນ PVC DN 18 | ອັນ | 2 | 6,000 | 12,000 | |
| <i>III</i> | <i>ວຽກເດີນໄທ້ເຂົ້າຫ້ອງກວດພະບາດ</i> | | | | 7,050,000 | |
| 1 | ສາຍໄຟຂະໜາດ 2x2.5 | ແມັດ | 150 | 15,000 | 2,250,000 | |
| 2 | ສາຍໄຟຂະໜາດ 2x1.5 | ແມັດ | 150 | 12,000 | 1,800,000 | |
| 3 | ສາຍໄຟຂະໜາດ 2x1 | ແມັດ | 50 | 10,000 | 500,000 | |
| 4 | ຊຸດກະດານໃຫຍ່ | ຊຸດ | 2 | 250,000 | 500,000 | |
| 5 | ປັກປຽບ 3ຮູ | ຊຸດ | 8 | 100,000 | 800,000 | |
| 6 | ສະວິກປິດເປີດ | ຊຸດ | 4 | 100,000 | 400,000 | |
| 7 | ດອກໄຟ | ຊຸດ | 4 | 100,000 | 400,000 | |
| 8 | ລາງວາຍເວຂະໜາດ 2.5 | ຊຸດ | 4 | 100,000 | 400,000 | |
| <i>IV</i> | <i>ສ້ອມແປງຫ້ອງນໍ້າ</i> | | | | 2,100,000 | |
| 1 | ວາງທໍ່ລະບາຍ | ຊຸດ | 1 | 800,000 | 800,000 | |
| 2 | ສ້ອມແປງລະບົບທໍ່ໃນຫ້ອງນໍ້າ | ຊຸດ | 1 | 500,000 | 500,000 | |
| 3 | ອານາໄມແລະທາສີຄິນໄຫ່ | ຊຸດ | 1 | 800,000 | 800,000 | |
| <i>V</i> | <i>ເຈຍບາດານໃໝ່ບໍ່ບິດ ແລະ ຕິດຕັ້ງໂປມດູດນໍ້າບາດານ</i> | | | | 36,257,000 | |

BoQ 03



| | | | | | | |
|---|---|----------|----|-----------|-------------------|--|
| A | BH Construction ວຽກຂຸດເຈາະບໍ່ບາດານ | | | | 26,000,000 | |
| 1 | BH Construction (Closed Type) ເຈາະບໍ່ບາດານໃໝ່ (ແບບປິດ) Borehole drilling as per design and technical specifications. Diameter 5.3/4" (146mm). Minimum 30m depth but not more than 45m. Including labor, fuel and lubricants, drilling fluids and/or drilling additives and muds ຂຸດເຈາະບໍ່ບາດານ ຕາມແບບ ແລະ ຂໍ້ກຳນົດທາງເຕັກນິກ, ເສັ້ນຜ່ານສູນກາງ 146 ມມ. ເລິກ 30 ແມັດ ຢ່າງໜ້ອຍ ແຕ່ບໍ່ກາຍ 45 ແມັດ, ລວມຄ່າແຮງງານ, ນໍ້າມັນເຊື້ອໄຟ, ນໍ້າມັນເຕືອງ, ນໍ້າຂີ້ຕົມ ແລະ ອຸປະກອນອື່ນໆທີ່ໃຊ້ເຂົ້າໃນການຂຸດເຈາະ | ຊຸດ | 1 | | 26,000,000 | |
| | | ml/ມຍ | 20 | 580,000 | 11,600,000 | |
| | | | 10 | 610,000 | 6,100,000 | |
| | | | 10 | 680,000 | 6,800,000 | |
| 2 | ການເຄື່ອນຍ້າເຄື່ອງກົນຈັກເຈາະນໍ້າບາດານ | ຊຸດ | 1 | 1,500,000 | 1,500,000 | |
| B | Construction of platform & pump shelter ກໍ່ສ້າງລານກັນເປື້ອນ ເບຕິງເສີມ ເຫລັກ (ແທ່ນກັນດປື້ອນ) | | | | 2,105,000 | |
| 1 | Concrete placing to the platform | set ພື້ນ | 1 | 1,455,000 | 1,455,000 | |
| 2 | Soil excavation for ditch for pipe | m ມ | 10 | 40,000 | 400,000 | |
| 3 | Pipe fitting work from pumping | LS ເໝົາ | 1 | 250,000 | 250,000 | |
| C | ກວດກາຄຸນະພາບນໍ້າ | | | | 780,000 | |
| 1 | ຄ່າກວດຄຸນະພາບນໍ້າບາດານ | set ຊຸດ | 1 | 780,000 | 780,000 | |
| D | Pump Installation (Electric Submersible pump), ຕິດຕັ້ງໄປມຸ່ມ | | | | 7,372,000 | |
| 1 | Supply and complete installation of | set ຊຸດ | 1 | 4,580,000 | 4,580,000 | |
| 2 | ບ່ອມສະວິກປິດ-ເປີດນໍ້າອັດຕະໂນມັດ | Each ຈຸດ | 1 | 380,000 | 380,000 | |
| 3 | ສາຍຢາງທ່ວງໄປມຸ່ມນໍ້າ | m ມ | 35 | 5,000 | 175,000 | |
| 4 | ຢາງຮັດສາຍໄຟ | Each ຈຸດ | 1 | 30,000 | 30,000 | |
| 5 | Breaker 20A ແບກເກີ້ | Each ຈຸດ | 1 | 85,000 | 85,000 | |
| 6 | Electric wire 2x1.5 mm2 ສາຍໄຟຟ້າ | m ມ | 60 | 12,000 | 720,000 | |
| 7 | Electric tape 3M ເທບດໍາຄຽນສາຍໄຟ 3M (ກັນນໍ້າ) | Each ກີ້ | 1 | 55,000 | 55,000 | |

BoQ 03

| | | | | | | |
|------------|--|------------|----|-----------|-------------------|--|
| 8 | PVC pipe 25mm dia., Class 8.5, 4 m length ທີ່ພິວິຊີ ຟີ 25ມມ, ຊັ້ນ 8.5, ເສັ້ນລະ 4ແມັດ | Each ເສັ້ນ | 14 | 45,000 | 630,000 | |
| 9 | PVC 90 deg. Elbow 35mm dia., class 13.5 ຂໍ້ 90 ຟີ 25ມມ, ຊັ້ນ 13.5 | Each ອັນ | 7 | 18,000 | 126,000 | |
| 10 | PVC gate valve 18mm dia., class 13.5 ປະຕູນໍ້າ ພິວິຊີ ຫຼຸດແດງ ຟີ 25ມມ, ຊັ້ນ 13.5 | Each ອັນ | 2 | 45,000 | 90,000 | |
| 11 | PVC straight socket 35mm dia., class 13.5 ຂໍ້ຕໍ່ຊື່ ຟີ 25ມມ, ຊັ້ນ 13.5 | Each ອັນ | 14 | 18,000 | 252,000 | |
| 12 | PVC coupling brass thread Male 35mm dia. Class 13.5 ກວນອກທາງ ຟີ 35ມມ ຊັ້ນ 13.5 | Each ອັນ | 1 | 50,000 | 50,000 | |
| 13 | PVC reducing socket 25-18mm dia., class 13.5 ຂໍ້ລົດຊື່ ຟີ 35-25ມ, ຊັ້ນ 13.5 | Each ອັນ | 1 | 25,000 | 25,000 | |
| 14 | Tepflon ເທບຂາວ ຄຽນກວມທໍ່ນໍ້າ | Each ກໍ່ | 1 | 25,000 | 25,000 | |
| 15 | PVC clamp for 25mm dia. Pvc pipe. ຢ່ວງຈັບ ທີ່ ພິວິຊີ ສໍາລັບ ທີ່ 25ມມ | Each ອັນ | 8 | 8,000 | 64,000 | |
| 16 | PVC glue 250g can ກາວຕິດທີ່ ພິວິຊີ ບ່ອງ 250ກຼາມ | Each ບ່ອງ | 1 | 85,000 | 85,000 | |
| VI | ຕິດຕັ້ງອ່າງສູງ (ລາຍລະອຽດແມ່ນເບິ່ງຕາມແບບ) | | | | 38,263,000 | |
| 1 | ເຫລັກກ່ອງ 75x75x1.8mm | ເສັ້ນ | 4 | 850,000 | 3,400,000 | |
| 2 | ເຫລັກກ່ອງ 40x80x1.4mm ຮ່ອງແຫ່ງລຸ່ມ- | ເສັ້ນ | 15 | 250,000 | 3,750,000 | |
| 3 | ເຫລັກສາກ 40x40x1.8mm ຄໍ້າຢັນ | ເສັ້ນ | 18 | 250,000 | 4,500,000 | |
| 4 | ເຫລັກກ່ອງ 2.5x40x1.4mm ຂັ້ນໄດ | ເສັ້ນ | 6 | 350,000 | 2,100,000 | |
| 5 | ແຫ່ງສະແຕນເລດແບບນອນ 2000ລິດ | ໝວຍ | 1 | 8,500,000 | 8,500,000 | |
| 6 | ທູບຈອດ | ກັບ | 5 | 75,000 | 375,000 | |
| 7 | ໃບເມິນຕັດເຫລັກ | ອັນ | 5 | 150,000 | 750,000 | |
| 8 | ສີທາໂຄງເຫລັກ | ກາ | 6 | 350,000 | 2,100,000 | |
| 9 | ຄ່ານາຍຊ່າງຈອດໂຄງເຫລັກພ້ອມທາສີ | ທັງໝົດ | | | 5,000,000 | |
| 10 | ຄ່າຂົນສົ່ງ | | | | 2,825,000 | |
| 11 | ເບຕິງພິ້ນເສີມດ້ວຍເຫລັກວາຍເມດ ພ້ອມແຮງ | ມ3 | 1 | 4,500,000 | 4,500,000 | |
| 12 | ຕີຜັງຈັບລະດັບ ແລະ ບັບດິນ | | | | 463,000 | |
| 3.2 | ໂຮງໝໍ່ນ້ອຍໜອງປົວ(I+II+III+IV+V+VI) | | | | 90,472,000 | |

BoC 03



ສາທາລະນະລັດ ປະຊາທິປະໄຕ ປະຊາຊົນລາວ
ສັນຕິພາບ ເອກະລາດ ປະຊາທິປະໄຕ ເອກະພາບ ວັດທະນາຖາວອນ

ແຂວງສາລະວັນ

ພະແນກ ໂຍທາທິການ ແລະ ຂົນສົ່ງ

ລັດວິສາຫະກິດນໍ້າປະປາ

ໂທ/ຟັກ: 034 212021 / 211069

ເລກທີ...../ນປປ.ສວ

ວັນທີ...../...../ . . .

ໃບປະເມີນລາຄາ 03

ບັບປຸງໂຮງໝໍ້ນ້ອຍຈຸດສຸມເມືອງເລົ່າງາມ

5.1 ໂຮງໝໍ້ນ້ອຍບ້ານພໍ່ເຂັ້ມ

| ລ/ດ | ລາຍການ | ຫົວໜ່ວຍ | ບໍລິມາດ | ລາຄາ(ກີບ) | ລວມລາຄາ(ກີບ) | ໝາຍເຫດ |
|------------|--|---------|---------|-----------|-------------------|--------|
| I | ເດີນທໍ່ນໍ້າໃໝ່ | | | | 3,150,000 | |
| 1 | ທໍ່ PVC DN 40 | ແມັດ | 100 | 15,000 | 1,500,000 | |
| 2 | ທໍ່ PVC DN 18 | ແມັດ | 100 | 5,000 | 500,000 | |
| 3 | ກາວ 1 ກິໂລ | ກິໂລ | 1 | 150,000 | 150,000 | |
| 4 | ສາມຕາ PVC DN 40/40/40 | ແມັດ | 2 | 20,000 | 40,000 | |
| 5 | ສາມຕາ PVC DN 40/40/18 | ອັນ | 4 | 20,000 | 80,000 | |
| 6 | ສາມຕາ PVC DN 18/18/18 | ອັນ | 10 | 6,000 | 60,000 | |
| 7 | ຂີ້ງ 90 PVC DN 18 | ອັນ | 10 | 6,000 | 60,000 | |
| 8 | ຂີ້ງ 90ກວງວິນ PVC DN 18 | ອັນ | 10 | 6,000 | 60,000 | |
| 9 | ກໍ່ອກນໍ້າ DN 18 | ອັນ | 10 | 60,000 | 600,000 | |
| 10 | ປະຕູນໍ້າ ຢາງ DN 40 | ອັນ | 2 | 50,000 | 100,000 | |
| III | ສ້ອມແປງວັດຖຸບາຍ | | | | 2,100,000 | |
| 1 | ວາງທໍ່ລະບາຍ | ຊຸດ | 1 | 800,000 | 800,000 | |
| 2 | ສ້ອມແປງລະບົບທໍ່ໃນຫ້ອງນໍ້າ | ຊຸດ | 1 | 500,000 | 500,000 | |
| 3 | ອານາໄມແລະທາສີຄີນໂຫນ່ | ຊຸດ | 1 | 800,000 | 800,000 | |
| V | ຕິດຕັ້ງໄປ່ມຈຸດນໍ້າບາດານແລະພັດທະນາບໍ່ບາດານເປົ່າແລະອານາໄມ | | | | 15,757,000 | |
| A | ວຽກສັດທະນາບໍ່ນໍ້າ (ເປົ່າອະນາໄມບໍ່ນໍ້າບາດານ) | | | | 7,800,000 | |
| 1 | ທູບມ້າງ ແລະ ຖອດໄປ່ມເກົ່າອອກ | ບໍ່ນໍ້າ | 1 | 350,000 | 350,000 | |
| 2 | ອະນາໄມພື້ນທີ່ ພ້ອມດ້ວຍເປົ່າອະນາໄມບໍ່ນໍ້າ 2 ຊິວໂມງຂັ້ນໄປ ຫລື ຈົນກວ່ານໍ້າຈະໃສສະອາດດີ ບໍ່ມີຊີ ບໍ່ມີຝຸນ. | ບໍ່ນໍ້າ | 1 | 5,950,000 | 5,950,000 | |
| 3 | ຊິ້ນເປືອງກິນຈັກ ແລະ ການເຕືອນຍ້າຍກິນຈັກ ເຖິງສະຖານທີ່ | ຜັ່ອ | 1 | 1,500,000 | 1,500,000 | |
| B | ວຽກກວດກາຄຸນນະພາບນໍ້າ | | | | 780,000 | |
| 1 | ຄໍາກວດຄຸນນະພາບນໍ້າບາດານ ຈໍານວນ 12 ຫາດ ຈໍາເປັນພື້ນຖານຂອງບໍ່ນໍ້າ ໃນຊຸມຊົນ | ບໍ່ນໍ້າ | 1 | 780,000 | 780,000 | |
| C | Pump Installation (Electric Submersible pump), ຕິດຕັ້ງໄປ່ມຈຸ່ມ | | | | 7,177,000 | |
| 1 | Supply and complete installation of Electric Submersible pump ໄປ່ມຊະນິດຈຸ່ມ ຂະໜາດ 1.5 ແຮງ, ພ້ອມທັງຕໍ່ລະບົບໄຟຟ້າເຂົ້າຫາໄປ່ມນໍ້າ | set ອຸດ | 1 | 4,580,000 | 4,580,000 | |

B02-05

| | | | | | | |
|------------------------------------|---|------------|----|---------|-------------------|--|
| 2 | ປ່ອມສະວີກາປິດ-ເປີດນໍ້າອັດຕະໂນມັດ | Each ອັບ | 1 | 220,000 | 220,000 | |
| 3 | ສາຍຢາງທ່ວງໄປມນໍ້າ | m ມ | 35 | 5,000 | 175,000 | |
| 4 | ຢາງຮັດສາຍໄຟ | Each ອັບ | 1 | 25,000 | 25,000 | |
| 5 | Breaker 20A ເບຼກເກີ້ | Each ອັບ | 1 | 55,000 | 55,000 | |
| 6 | Electric wire 2x1.5 mm2 ສາຍໄຟຟ້າ | m ມ | 60 | 12,000 | 720,000 | |
| 7 | Electric tape 3M ເທບຕໍາຄຽນສາຍໄຟ 3M (ກັນນໍ້າ) | Each ກີ້ | 1 | 55,000 | 55,000 | |
| 8 | PVC pipe 25mm dia., Class 8.5, 4 m length ທີ່ ພິວິຊີ ຟີ 25ມມ, ຊັ້ນ 8.5, ເສັ້ນລະ 4ແມັດ | Each ເສັ້ນ | 14 | 45,000 | 630,000 | |
| 9 | PVC 90 deg. Elbow 35mm dia., class 13.5 ຂີ້ງ 90 ຟີ 25ມມ, ຊັ້ນ 13.5 | Each ອັບ | 7 | 18,000 | 126,000 | |
| 10 | PVC gate valve 18mm dia., class 13.5 ປະຕູນໍ້າ ພິວິຊີ ຫຼຸດແດງ ຟີ 25ມມ, ຊັ້ນ 13.5 | Each ອັບ | 2 | 45,000 | 90,000 | |
| 12 | PVC straight socket 35mm dia., class 13.5 ຂີ້ຕໍ່ຊີ້ ຟີ 25ມມ, ຊັ້ນ 13.5 | Each ອັບ | 14 | 18,000 | 252,000 | |
| 13 | PVC coupling brass threath Male 35mm dia. Class 13.5 ກຽວນອກທອງ ຟີ 35ມມ ຊັ້ນ 13.5 | Each ອັບ | 1 | 50,000 | 50,000 | |
| 14 | PVC reducing socket 25-18mm dia.,class 13.5 ຂີ້ລົດຊີ້ ຟີ 35-25ມ, ຊັ້ນ 13.5 | Each ອັບ | 1 | 25,000 | 25,000 | |
| 15 | Teflon ເທບຂາວ ຄຽນກຽວຫໍ່ນໍ້າ | Each ກີ້ | 1 | 25,000 | 25,000 | |
| 16 | PVC clamp for 25mm dia. Pvc pipe. ຍ່ວງຈັບ ທີ່ ພິວິຊີ ສໍາລັບ ທີ່ 25ມມ | Each ອັບ | 8 | 8,000 | 64,000 | |
| 17 | PVC glue 250g can ກາວຕິດທີ່ ພິວິຊີ ປ່ອງ 250ກຽມ | Each ປ່ອງ | 1 | 85,000 | 85,000 | |
| ລວມມູນຄ່າທັງໝົດ I+II+III+IV | | | | | 21,007,000 | |

BoQ 05



ສາທາລະນະລັດ ປະຊາທິປະໄຕ ປະຊາຊົນລາວ
ສັນຕິພາບ ເອກະລາດ ປະຊາທິປະໄຕ ເອກະພາບ ວັດທະນາຖາວອນ

ແຂວງສາລະວັນ
ພະແນກ ໂຍທາທິການ ແລະ ຂົນສົ່ງ
ລັດວິສາຫະກິດນໍ້າປະປາ
ໂທ/ແຟັກ: 034 212021 / 211069

ເລກທີ...../ນປປ.ສວ
ວັນທີ...../...../.....

ໃບປະເມີນລາຄາ 02
ບັນຍັດໂຮງໝໍ້ນ້ອຍຈຸດສຸມເມືອງຄົງເຊໂດນ

| ລ/ດ | ລາຍການ | ຫົວໜ່ວຍ | ບໍລິມາດ | ລາຄາ(ກີບ) | ລວມລາຄາ(ກີບ) | ໝຫ |
|-----|---------------------------------------|---------|---------|-----------|--------------|----|
| 4.1 | ໂຮງໝໍ້ນ້ອຍບ້ານນາມວງ(I+II+III+IV+V+VI) | | | | 27,511,000 | |
| I | ເດີນທໍ່ນໍ້າໄຫຼ່ | | | | 2,150,000 | |
| 1 | ທໍ່ PVC DN 40 | ແມັດ | 50 | 15,000 | 750,000 | |
| 2 | ທໍ່ PVC DN 18 | ແມັດ | 50 | 5,000 | 250,000 | |
| 3 | ກາວ 1 ກິໂລ | ກິໂລ | 1 | 150,000 | 150,000 | |
| 4 | ສາມຕາ PVC DN 40/40/40 | ແມັດ | 2 | 20,000 | 40,000 | |
| 5 | ສາມຕາ PVC DN 40/40/18 | ອັນ | 4 | 20,000 | 80,000 | |
| 6 | ສາມຕາ PVC DN 18/18/18 | ອັນ | 10 | 6,000 | 60,000 | |
| 7 | ຂໍ້ 90 PVC DN 18 | ອັນ | 10 | 6,000 | 60,000 | |
| 8 | ຂໍ້ 90ກວຽວໃນ PVC DN 18 | ອັນ | 10 | 6,000 | 60,000 | |
| 9 | ກໍ່ອກນໍ້າ DN 18 | ອັນ | 10 | 60,000 | 600,000 | |
| 10 | ປະຕູນໍ້າ ຢາງ DN 40 | ອັນ | 2 | 50,000 | 100,000 | |
| II | ຕິດຕັ້ງອ່າງລ້າງມື | | | | 1,704,000 | |
| 1 | ອ່າງລ້າງມື | | 2 | 600,000 | 1,200,000 | |
| 2 | ທໍ່ PVC DN 40 | ແມັດ | 20 | 15,000 | 300,000 | |
| 3 | ຂໍ້ PVC DN 40 | ອັນ | 8 | 15,000 | 120,000 | |
| 4 | ສາມຕາ PVC DN 18/18/18 | ອັນ | 2 | 6,000 | 12,000 | |
| 5 | ຂໍ້ 90 PVC DN 18 | ອັນ | 10 | 6,000 | 60,000 | |
| 6 | ຂໍ້ 90ກວຽວໃນ PVC DN 18 | ອັນ | 2 | 6,000 | 12,000 | |
| III | ວຽກເດີນໄຟ້າເຂົ້າຫ້ອງກວດພະຍາດ | | | | 5,800,000 | |
| 1 | ສາຍໄຟຂະໜາດ 2x2.5 | ແມັດ | 150 | 15,000 | 2,250,000 | |
| 2 | ສາຍໄຟຂະໜາດ 2x1.5 | ແມັດ | 150 | 12,000 | 1,800,000 | |
| 3 | ສາຍໄຟຂະໜາດ 2x1 | ແມັດ | 50 | 10,000 | 500,000 | |
| 4 | ຊຸດກະດານໃຫຍ່ | ຊຸດ | 1 | 250,000 | 250,000 | |
| 5 | ປັກປຽບ 3ຮູ | ຊຸດ | 4 | 100,000 | 400,000 | |
| 6 | ສະວິກປັດເປັດ | ຊຸດ | 2 | 100,000 | 200,000 | |
| 7 | ຕອກໄຟ | ຊຸດ | 2 | 100,000 | 200,000 | |
| 8 | ລາງວາຍເວຂະໜາດ 2.5 | ຊຸດ | 2 | 100,000 | 200,000 | |
| IV | ສ້ອມແປງຫ້ອງນໍ້າ | | | | 2,100,000 | |
| 1 | ວາງທໍ່ລະບາຍ | ຊຸດ | 1 | 800,000 | 800,000 | |
| 2 | ສ້ອມແປງລະບົບທໍ່ໃນຫ້ອງນໍ້າ | ຊຸດ | 1 | 500,000 | 500,000 | |

BoQ 04

| | | | | | | | |
|-----|--|------------|----|-----------|-----------|--------------------|--|
| 3 | ອານາໄມແລະທາສີຕິນໄໝ່ | ຊຸດ | 1 | 800,000 | 800,000 | | |
| V | ຕິດຕັ້ງໄປມດູດນໍ້າບາດານແລະພັດທະນາບໍ່ບາດານເປົ້າແລະອານາໄມ | | | | | 15,757,000 | |
| A | ວຽກພັດທະນາບໍ່ນໍ້າ (ເປົ້າອະນາໄມບໍ່ບາດານ) | | | | | 7,800,000 | |
| 1 | ທູບມັງ ແລະ ຖອດໄປມເກົ່າອອກ | ບໍ່ນໍ້າ | 1 | 350,000 | 350,000 | | |
| 2 | ອະນາໄມພື້ນທີ່ ພ້ອມດ້ວຍເປົ້າອະນາໄມບໍ່ນໍ້າ 2 ຊິວໂມງຂຶ້ນໄປ ຫລື ຈົນກວ່ານໍ້າຈະໃສສະອາດດີ ບໍ່ມີຊີ ບໍ່ມີຝຸ່ນ. | ບໍ່ນໍ້າ | 1 | 5,950,000 | 5,950,000 | | |
| 3 | ຊັ້ນເປືອງກິນຈັກ ແລະ ການເຄື່ອນຍ້າຍກິນຈັກເຖິງສະຖານທີ່ | ເທື່ອ | 1 | 1,500,000 | 1,500,000 | | |
| B | ວຽກກວດກາຄຸນະພາບນໍ້າ | | | | | 780,000 | |
| 1 | ຄໍາກວດຄຸນະພາບນໍ້າບາດານ ຈໍານວນ 12 ທາດ ຈໍາເປັນພື້ນຖານຂອງບໍ່ນໍ້າໃນຊຸມຊົນ | ບໍ່ນໍ້າ | 1 | 780,000 | 780,000 | | |
| C | Pump Installation (Electric Submersible pump), ຕິດຕັ້ງໄປມຈຸ່ມ | | | | | 7,177,000 | |
| 1 | Supply and complete installation of Electric Submersible pump ໄປມຊະນິດຈຸ່ມ ຂະໜາດ 1.5 ແຮງ, ພ້ອມທັງຕໍ່ລະບົບໄຟຟ້າເຂົ້າຫາໄປມນໍ້າ | set ຊຸດ | 1 | 4,580,000 | 4,580,000 | | |
| 2 | ປ້ອມສະວິກປັດ-ເປີດນໍ້າອັດຕະໂນມັດ | Each ອັນ | 1 | 220,000 | 220,000 | | |
| 3 | ສາຍຢາງທ່ວງໄປມນໍ້າ | m ມ | 35 | 5,000 | 175,000 | | |
| 4 | ຢາງອັດສາບໄຟ | Each ອັນ | 1 | 25,000 | 25,000 | | |
| 5 | Breaker 20A ເບຼກເຕີ້ | Each ອັນ | 1 | 55,000 | 55,000 | | |
| 6 | Electric wire 2x1.5 mm2 ສາຍໄຟຟ້າ | m ມ | 60 | 12,000 | 720,000 | | |
| 7 | Electric tape 3M ເທບດໍາຄຽນສາຍໄຟ 3M (ກັນນໍ້າ) | Each ກໍ່ | 1 | 55,000 | 55,000 | | |
| 8 | PVC pipe 25mm dia., Class 8.5, 4 m length ທໍ່ ພີວີຊີ ຟີ 25ມມ, ຊັ້ນ 8.5, ເລິ່ນລະ 4 ແມັດ | Each ເລິ່ນ | 14 | 45,000 | 630,000 | | |
| 9 | PVC 90 deg. Elbow 35mm dia., class 13.5 ຂໍ້ງ່ຽງ 90 ຟີ 25ມມ, ຊັ້ນ 13.5 | Each ອັນ | 7 | 18,000 | 126,000 | | |
| 10 | PVC gate valve 18mm dia., class 13.5 ປະຕູນໍ້າ ພີວີຊີ ຫຼາດຽງ ຟີ 25ມມ, ຊັ້ນ 13.5 | Each ອັນ | 2 | 45,000 | 90,000 | | |
| 12 | PVC straigh socket 35mm dia., class 13.5 ຂໍ້ຕໍ່ຊື່ ຟີ 25ມມ, ຊັ້ນ 13.5 | Each ອັນ | 14 | 18,000 | 252,000 | | |
| 13 | PVC coupling brass threath Male 35mm dia. Class 13.5 ກຽວນອກທອງ ຟີ 35ມມ ຊັ້ນ 13.5 | Each ອັນ | 1 | 50,000 | 50,000 | | |
| 14 | PVC reducing socket 25-18mm dia.,class 13.5 ຂໍ້ລົດຊື່ ຟີ 35-25ມ, ຊັ້ນ 13.5 | Each ອັນ | 1 | 25,000 | 25,000 | | |
| 15 | Teflon ເທບຂາວ ຄຽນກຽວທໍ່ນໍ້າ | Each ກໍ່ | 1 | 25,000 | 25,000 | | |
| 16 | PVC clamp for 25mm dia. Pvc pipe. ຍ່ວງຈັບ ທໍ່ ພີວີຊີ ສໍາລັບ ທໍ່ 25ມມ | Each ອັນ | 8 | 8,000 | 64,000 | | |
| 17 | PVC glue 250g can ກາວຕິດທໍ່ ພີວີຊີ ບ່ອງ 250ກຼາມ | Each ບ່ອງ | 1 | 85,000 | 85,000 | | |
| 4.2 | ໂຮງໝໍ້ນ້ອຍບ້ານປົງ(I+II+III+IV+V) | | | | | 223,356,357 | |
| I | ເງິນທໍ່ນໍ້າໄໝ່ | | | | | 2,390,000 | |

BoQ 04

| | | | | | | |
|--|--------------------------------------|----------------|-------|--------------|-----------------------|--|
| 1 | ທໍ່ PVC DN 40 | ແມັດ | 50 | 15,000 | 750,000 | |
| 2 | ທໍ່ PVC DN 18 | ແມັດ | 50 | 5,000 | 250,000 | |
| 3 | ກາວ 1 ກິໂລ | ກິໂລ | 1 | 150,000 | 150,000 | |
| 4 | ສາມຕາ PVC DN 40/40/40 | ແມັດ | 2 | 20,000 | 40,000 | |
| 5 | ສາມຕາ PVC DN 40/40/18 | ອັນ | 4 | 20,000 | 80,000 | |
| 6 | ສາມຕາ PVC DN 18/18/18 | ອັນ | 10 | 6,000 | 60,000 | |
| 7 | ຂໍ້ 90 PVC DN 18 | ອັນ | 50 | 6,000 | 300,000 | |
| 8 | ຂໍ້ 90ກວງໃນ PVC DN 18 | ອັນ | 10 | 6,000 | 60,000 | |
| 9 | ກໍ່ອກນໍ້າ DN 18 | ອັນ | 10 | 60,000 | 600,000 | |
| 10 | ປະຕູນໍ້າ ຢາງ DN 40 | ອັນ | 2 | 50,000 | 100,000 | |
| II ຕິດຕັ້ງອ່າງລ້າງມື | | | | | 3,252,000 | |
| 1 | ອ່າງລ້າງມື | | 4 | 600,000 | 2,400,000 | |
| 2 | ທໍ່ PVC DN 40 | ແມັດ | 40 | 15,000 | 600,000 | |
| 3 | ຂໍ້ PVC DN 40 | ອັນ | 10 | 15,000 | 150,000 | |
| 4 | ສາມຕາ PVC DN 18/18/18 | ອັນ | 4 | 6,000 | 24,000 | |
| 5 | ຂໍ້ 90 PVC DN 18 | ອັນ | 10 | 6,000 | 60,000 | |
| 6 | ຂໍ້ 90ກວງໃນ PVC DN 18 | ອັນ | 3 | 6,000 | 18,000 | |
| III ວຽກເຕີມໄຟ້າເຂົ້າຫ້ອງກວດພະຍາດ | | | | | 6,200,000 | |
| 1 | ສາຍໄຟຂະໜາດ 2x2.5 | ແມັດ | 100 | 15,000 | 1,500,000 | |
| 2 | ສາຍໄຟຂະໜາດ 2x1.5 | ແມັດ | 100 | 12,000 | 1,200,000 | |
| 3 | ສາຍໄຟຂະໜາດ 2x1 | ແມັດ | 100 | 10,000 | 1,000,000 | |
| 4 | ຊຸດກະດານໃຫຍ່ | ຊຸດ | 2 | 250,000 | 500,000 | |
| 5 | ປັກປຽບ 3ຮູ | ຊຸດ | 8 | 100,000 | 800,000 | |
| 6 | ສະວິກປັດເປີດ | ຊຸດ | 4 | 100,000 | 400,000 | |
| 7 | ດອກໄຟ | ຊຸດ | 4 | 100,000 | 400,000 | |
| 8 | ລາງວາຍເວຂະໜາດ 2.5 | ຊຸດ | 4 | 100,000 | 400,000 | |
| IV ຫ້ອງນໍ້າ ຂະໜາດ: 3.00 x 4.80 m, 2 ຫ້ອງສ້ວມ, 2 ຫ້ອງອາບນໍ້າ | | | | | 136,994,356.67 | |
| 1 | ວຽກຕິດຕັ້ງ | | | | 832,608.00 | |
| 1.1 | ປັກຝັງ ແລະ ຂຸດຂຸມຕີນຕົ້ມ | ຊຸມ | 6.00 | 138,768.00 | 832,608.00 | |
| 2 | ວຽກພື້ນອາຄານ | | | - | 42,629,948.16 | |
| 2.1 | ຖິ້ມຊາຍຫີນນໍ້າຕໍ່າແໜ້ນ ຕີນເສົາ | m ³ | 0.73 | 242,844.00 | 177,033.28 | |
| 2.2 | ເບຕົງກັນເປື້ອນຕີນເສົາ M-15 | m ³ | 0.36 | 1,561,140.00 | 569,035.53 | |
| 2.3 | ເບຕົງເສີມເຫຼັກຕີນເສົາ ແລະ ຕໍ່ມໍ M-25 | m ³ | 1.58 | 4,163,040 | 6,581,766.24 | |
| 2.4 | ເບຕົງເສີມເຫຼັກ ຄານຄໍຕີນ M-25 | m ³ | 1.50 | 4,163,040 | 6,244,560.00 | |
| 2.5 | ກໍ່ຝາຕີນຈໍ່ໜ້າ 20 ຊຸມ | m ² | 15.54 | 148,308.00 | 2,304,706.32 | |
| 2.6 | ຕີນຖິ້ມ | m ³ | 10.15 | 109,279.20 | 1,109,183.88 | |
| 2.7 | ຖິ້ມຊາຍຫີນນໍ້າຕໍ່າແໜ້ນ | m ³ | 2.54 | 260,190.00 | 660,752.51 | |
| 2.8 | ເບຕົງເສີມເຫຼັກ ແຜ່ນພື້ນ M-20 | m ³ | 2.34 | 3,816,120.00 | 8,923,996.62 | |
| 2.9 | ປູກະໂລ | m ² | 30.19 | 312,228.00 | 9,424,914.41 | |
| 2.10 | ເບຕົງ ແຜ່ນພື້ນຮອງອອກ M-20 | m ³ | 1.71 | 3,816,120.00 | 6,519,841.02 | |
| 2.10 | ຜ້າຢາງປູພື້ນ | m ² | 24.38 | 4,683.42 | 114,158.36 | |

B6Q U4

| | | | | | |
|----------|--|----------------|----------|--------------|----------------------|
| 3 | ວຽກເສົາ ແລະ ຄານເອ້ນ | | | - | 5,649,245.28 |
| 3.1 | ເບຕົງເສັ້ມເຫຼັກ ເສົາອາຄານ M-25 | m ³ | 0.57 | 4,163,040 | 2,360,443.68 |
| 3.2 | ເບຕົງເສັ້ມເຫຼັກ ຄານເອ້ນ M-25 | m ³ | 0.79 | 4,163,040 | 3,288,801.60 |
| 4 | ວຽກໂຄງຫຼັງຄາ | | | - | 18,889,794.00 |
| 4.1 | ມຸງຫຼັງຄາ ດ້ວຍ ອາລູມິນຽມ ໜາ 0.25 mm | m ² | 37.50 | 416,304.00 | 15,611,400.00 |
| 4.2 | ໄມ້ເຊິລາ ສໍາລັບເຮັດປ້ານລົມ ໜ້າ20 | m | 27.00 | 121,422.00 | 3,278,394.00 |
| 5 | ວຽກຕົບແຕ່ງຜິວ | | | - | 57,696,101.23 |
| 5.1 | ກໍ່ຝາດິນຈີ່ໜ້າ 10 ຊມ ພ້ອມໂບກ 2 ດ້ານ | m ² | 70.30 | 208,152.00 | 14,633,085.60 |
| 5.2 | ບໍ່ອກຊ່ອງລົມ | ກ້ອນ | 36.00 | 3,989.58 | 143,624.88 |
| 5.3 | ຂັ້ນຝາຫ້ອງນໍ້າ ສໍາລັດຮູບ | m ² | 20.15 | 780,570.00 | 15,728,485.50 |
| 5.4 | ປະຕູຫ້ອງສ້ວມ ສໍາລັດຮູບ ຂະໜາດ: 70 c | ບານ | 2.00 | 693,840.00 | 1,387,680.00 |
| 5.5 | ປະຕູຫ້ອງອາບນໍ້າ ສໍາລັດຮູບ ຂະໜາດ: 70 | ບານ | 2.00 | 693,840.00 | 1,387,680.00 |
| 5.6 | ຕິດຕັ້ງໂຖສະໂຄກນັ່ງຍອງ | Set | 2.00 | 1,214,220.00 | 2,428,440.00 |
| 5.7 | ຕິດຕັ້ງລ່າວເຄືອງ | Set | 4.00 | 234,171.00 | 936,684.00 |
| 5.8 | ຕິດຕັ້ງຊຸດກ້ອກວາວຊັ້ນວາ | Set | 4.00 | 187,366.80 | 749,467.20 |
| 5.9 | ຕິດຕັ້ງຊຸດອ່າງລ້າງໜ້າ | Set | 2.00 | 867,300.00 | 1,734,600.00 |
| 5.10 | ຕິດຕັ້ງແນວຊິດກັນ | ຊຸດ | 2.00 | 234,171.00 | 468,342.00 |
| 5.11 | ຕິດຕັ້ງຊຸດແວ່ນພ້ອມຖ້ານວາງເຄືອງ | Set | 2.00 | 607,110.00 | 1,214,220.00 |
| 5.12 | ວາງລະບົບທໍ່ ນໍ້າໃຊ້ PVC 20 mm | m | 30.00 | 34,692.00 | 1,040,760.00 |
| 5.13 | ລາງເຫຼັກລະບາຍ ນໍ້າເສຍ PVC 35 mm | m | 6.50 | 52,038.00 | 338,247.00 |
| 5.14 | ວາງລະບົບທໍ່ລະບາຍ ອາໂຈມ PVC 100 m | m | 30.00 | 86,730.00 | 2,601,900.00 |
| 5.15 | ທາສີ ອາຄານ ພາຍໃນ - ພາຍນອກ ສີນໍ້າ | m ² | 118.90 | 52,038.00 | 6,187,318.20 |
| 5.16 | ທາສີຮອງພື້ນ ພາຍໃນ - ພາຍນອກ ສີນໍ້າ | m ² | 118.90 | 46,834.00 | 5,568,562.60 |
| 5.17 | ທາສີກັນເປື້ອນ ຮອບນອກອາຄານ ສີນໍ້າມັນ | m ² | 12.20 | 43,365.00 | 529,053.00 |
| 5.18 | ທາສີກັນເປື້ອນ ຮອບໃນອາຄານ ສີນໍ້າມັນ | m ² | 14.25 | 43,365.00 | 617,951.25 |
| 6 | ວຽກໄຟຟ້າ | | | - | 7,827,360.00 |
| 6.1 | ສາຍໄຟແລ່ນໃນອາຄານ ສາຍທອງ 2 x 1.5 m | m | 75.00 | 49,956.48 | 3,746,736.00 |
| 6.2 | ສາຍໄຟແລ່ນໃນອາຄານ ສາຍທອງ 2 x 1.0 m | m | 45.00 | 39,028.00 | 1,756,260.00 |
| 6.3 | ສະວິກໄຟ ພ້ອມກະດານໄຟ ລວມຄົບຊຸດ | Set | 2.00 | 693,840.00 | 1,387,680.00 |
| 6.4 | ດອກໄຟປຸ້ມ | Set | 6.00 | 156,114.00 | 936,684.00 |
| Z | ວຽກອ່າງເກັບ | | | - | 3,469,300.00 |
| 7.1 | ຊຸດຂຸມອ່າງເກັບອາຈິມ ແລະ ນໍ້າເສຍ | ຊຸດ | 1.00 | 3,469,300 | 3,469,300.00 |
| V | ເຈາະບໍ່ມາດານໃໝ່ບໍ່ມີດ ແລະ ຕິດຕັ້ງໂປມຕຸດນໍ້າມາດານ | | | | 36,257,000 |
| A | BH Construction ວຽກຊຸດເຈາະບໍ່ມາດານ | | | | 26,000,000 |
| | BH Construction (Closed Type) ເຈາະບໍ່ມາດານໃໝ່ (ແບບມີດ) | ຊຸດ | <i>1</i> | | 26,000,000 |
| | Borehole drilling as per design and technical specifications. Diameter 5.3/4" (146mm). | | 20 | 580,000 | 11,600,000 |
| | | | 10 | 610,000 | 6,100,000 |
| | | | 10 | 680,000 | 6,800,000 |

BoQ 04

| | | | | | | |
|---|--|------------|----|-----------|-----------|------------------|
| 1 | Minimum 30m depth but not more than 45m. Including labor, fuel and lubricants, drilling fluids and/or drilling additives and muds ຂຸດເຈາະບໍ່ບາດານ ຕາມແບບ ແລະ ຂີ້ກໍາ ນິດທາງເຕັກນິກ, ເສັ້ນຜ່ານສູນກາງ 146 ມມ. ເລິກ 30 ແມັດ ຢ່າງໜ້ອຍ ແຕ່ບໍ່ກາຍ 45 ແມັດ, ລວມຄ່າແຮງງານ, ນໍ້າມັນເຊື້ອ ໄຟ, ນໍ້າມັນເຄື່ອງ, ນໍ້າຂີ້ຕົມ ແລະ ອຸປະກອນອື່ນໆທີ່ໃຊ້ເຂົ້າໃນການຂຸດເຈາະ | ml/ມຍ | | | | |
| 2 | ການເຄື່ອນຍ້າເຄື່ອງກິນຈັກເຈາະນໍາບາດານ | ຊຸດ | 1 | 1,500,000 | 1,500,000 | |
| B | Construction of platform & pump shelter ກໍ່ສ້າງລານກັນເປື້ອນ ເບຕິງເສີມເຫລັກ (ແທນກັນດປ້ອນ) | | | | | 2,105,000 |
| 1 | Concrete placing to the platform | set ໜ່ວຍ | 1 | 1,455,000 | 1,455,000 | |
| 2 | Soil excavation for ditch for pipe | m ມ | 10 | 40,000 | 400,000 | |
| 3 | Pipe fitting work from pumping | LS ເໜົາ | 1 | 250,000 | 250,000 | |
| C | ກວດກາຄຸນະພາບນໍ້າ | | | | | 780,000 |
| 1 | ຄ່າກວດຄຸນະພາບນໍ້າບາດານ | set ຊຸດ | 1 | 780,000 | 780,000 | |
| D | Pump Installation (Electric Submersible pump), ຕິດຕັ້ງໄປ້ມຈຸ່ມ | | | | | 7,372,000 |
| 1 | Supply and complete installation | set ຊຸດ | 1 | 4,580,000 | 4,580,000 | |
| 2 | ບ່ອມສະວິກປິດ-ເປີດນໍ້າອັດຕະໂນມັດ | Each ອັນ | 1 | 380,000 | 380,000 | |
| 3 | ສາຍຢາງທ່ວງໄປ້ມນໍ້າ | m ມ | 35 | 5,000 | 175,000 | |
| 4 | ຢາງຮັດສາຍໄຟ | Each ອັນ | 1 | 30,000 | 30,000 | |
| 5 | Breaker 20A ເບຼກເກີ້ | Each ອັນ | 1 | 85,000 | 85,000 | |
| 6 | Electric wire 2x1.5 mm2 ສາຍໄຟຟ້າ | m ມ | 60 | 12,000 | 720,000 | |
| 7 | Electric tape 3M ເທບດໍາຄຽນສາຍໄຟ 3M (ກັນນໍ້າ) | Each ກີ້ | 1 | 55,000 | 55,000 | |
| 8 | PVC pipe 25mm dia., Class 8.5, 4 m length ທໍ່ ພີວີຊີ ຟີ 25ມມ, ຊັ້ນ 8.5, ເສັ້ນລະ 4ແມັດ | Each ເສັ້ນ | 14 | 45,000 | 630,000 | |
| 9 | PVC 90 deg. Elbow 35mm dia., class 13.5 ຂໍ້ງໍ 90 ຟີ 25ມມ, ຊັ້ນ 13.5 | Each ອັນ | 7 | 18,000 | 126,000 | |

BoQ 04

| | | | | | |
|--------------------------------|---|-----------|----|-----------|--------------------|
| 10 | PVC gate valve 18mm dia., class 13.5 ປະຕູນໍ້າ ພິວີຊີ ຫຼື ດຳ ພິວີ 25ມມ, ຊັ້ນ 13.5 | Each ອັນ | 2 | 45,000 | 90,000 |
| 11 | PVC straight socket 35mm dia., class 13.5 ຂໍ້ຕໍ່ຊື່ ພິວີ 25ມມ, ຊັ້ນ 13.5 | Each ອັນ | 14 | 18,000 | 252,000 |
| 12 | PVC coupling brass threath Male 35mm dia. Class 13.5 ກງວ ນອກທອງ ພິວີ 35ມມ ຊັ້ນ 13.5 | Each ອັນ | 1 | 50,000 | 50,000 |
| 13 | PVC reducing socket 25-18mm dia., class 13.5 ຂໍ້ລົດຊື່ ພິວີ 35-25ມ, ຊັ້ນ 13.5 | Each ອັນ | 1 | 25,000 | 25,000 |
| 14 | Teflon ເທບຂາວ ຄຽນກງວທໍ່ນໍ້າ | Each ກໍ່ | 1 | 25,000 | 25,000 |
| 15 | PVC clamp for 25mm dia. Pvc pipe. ບ່ວງຈັບ ທໍ່ ພິວີຊີ ສໍາລັບ ທໍ່ 25ມມ | Each ອັນ | 8 | 8,000 | 64,000 |
| 16 | PVC glue 250g can ກາວດດທ ພວ ຊື່ ບ່ອງ 250ກາມ | Each ບ່ອງ | 1 | 85,000 | 85,000 |
| VI ຕິດຕັ້ງອ່າງສູງ | | | | | 38,263,000 |
| 1 | ເຫລັກກ່ອງ 75x75x1.8mm | ເສັ້ນ | 4 | 850,000 | 3,400,000 |
| 2 | ເຫລັກກ່ອງ 40x80x1.4mm ອ່ອງແຫ່ງ ລຸ່ມ-ເທິງ ແລະ ຮາວ | ເສັ້ນ | 15 | 250,000 | 3,750,000 |
| 3 | ເຫລັກສາກ 40x40x1.8mm ດໍາຍັ້ນ | ເສັ້ນ | 18 | 250,000 | 4,500,000 |
| 4 | ເຫລັກກ່ອງ 2.5x40x1.4mm ຂັ້ນໂຕ | ເສັ້ນ | 6 | 350,000 | 2,100,000 |
| 5 | ແຫ່ງສະແຕນເລດແບບນອນ 2000ລິດ | ໝໍວຍ | 1 | 8,500,000 | 8,500,000 |
| 6 | ທຸບຈອດ | ກັບ | 5 | 75,000 | 375,000 |
| 7 | ໃບເມິນຕັດເຫລັກ | ອັນ | 5 | 150,000 | 750,000 |
| 8 | ສີທາໂຄງເຫລັກ | ກາກ | 6 | 350,000 | 2,100,000 |
| 9 | ຄໍານາຍຊ່າງຈອດໂຄງເຫລັກພ້ອມທາສີ | ທັງໝົດ | | | 5,000,000 |
| 10 | ຄໍາຂົນສົ່ງ | | | | 2,825,000 |
| 11 | ເບຕົງພື້ນເສີມດ້ວຍເຫລັກວາຍເມດ ພ້ອມ ແຮງງານ | ມ3 | 1 | 4,500,000 | 4,500,000 |
| 12 | ຕີຜັງຈັບລະດັບ ແລະ ປັບດິນ | | | | 463,000 |
| ລວມມູນຄ່າທັງໝົດ 4.1+4.2 | | | | | 250,867,357 |

BoQ 04



ສາທາລະນະລັດ ປະຊາທິປະໄຕ ປະຊາຊົນລາວ
ສັນຕິພາບ ເອກະລາດ ປະຊາທິປະໄຕ ເອກະພາບ ວັດທະນາຖາວອນ

ແຂວງສາລະວັນ
ພະແນກ ໂຍທາທິການ ແລະ ຂົນສົ່ງ
ລັດວິສາຫະກິດນໍ້າປະປາ
ໂທ/ແຟັກ: 034 212021 / 211069

ເລກທີ...../ນປປ.ສວ
ວັນທີ...../...../

ສົມທຽບ ປະເມີນລາຄາ 01,02,03,04,05,06(ບັບແບບຕາມUn-Habitat)

| ລ/ດ | ຊື່ເມືອງ / ສູນປົ່ນປົວ | ລວມລາຄາໃໝ່(ກີບ) | ລວມລາຄາເກົ່າ(ກີບ) |
|---|--|-----------------|-------------------|
| 01 | ບັບປຸງຈຸດກັນກອງພະຍາດໂຄວິດ 19 ຂອງໂຮງໝໍແຂວງສາລະວັນ | | 8,944,000 |
| 1.1 | ຈຸດກັນກອງພະຍາດໂຄວິດ | | 8,944,000 |
| 02 | ບັບປຸງສູນປົ່ນປົວພະຍາດໂຄວິດ 19 ຂອງແຂວງສາລະວັນ | | 37,736,000 |
| 2.1 | ສູນປົ່ນປົວໜອງປູ່ | | 37,736,000 |
| 03 | ບັບປຸງໂຮງໝໍນ້ອຍຈຸດສຸມ ເມືອງສາລະວັນ | 178,656,000 | 151,980,000 |
| 3.1 | ໂຮງໝໍນ້ອຍນາໂພ | 88,184,000 | 75,564,000 |
| 3.2 | ຈຸດສຸມພັດທະນາໜອງປົວ | 90,472,000 | 76,416,000 |
| 04 | ບັບປຸງໂຮງໝໍນ້ອຍຈຸດສຸມເມືອງຄົງເຊໂດນ | 250,867,357 | 209,403,000 |
| 4.1 | ໂຮງໝໍນ້ອຍບ້ານນາມວງ | 27,511,000 | 61,844,000 |
| 4.2 | ໂຮງໝໍນ້ອຍບ້ານປັງ | 223,356,357 | 147,559,000 |
| 05 | ບັບປຸງໂຮງໝໍນ້ອຍຈຸດສຸມເມືອງເລົ້າງາມ | 21,007,000 | 23,744,000 |
| 5.1 | ໂຮງໝໍນ້ອຍບ້ານພໍ່ເຂັ້ມ | 21,007,000 | 23,744,000 |
| 06 | ບັບປັງໂຮງໝໍນ້ອຍຈຸດສຸມ ເມືອງລະຄອນໜຶ່ງ | 191,209,357 | 171,303,500 |
| 6.1 | ໂຮງໝໍນ້ອຍຕະພານ | | 26,844,000 |
| 6.2 | ໂຮງໝໍນ້ອຍບ້ານທ່າ | 191,209,357 | 144,459,500 |
| ລວມມູນຄ່າທັງໝົດ (ກີບ) | | 641,739,713 | 603,110,500 |
| ອັດຕາແລກປ່ຽນ19/10/2022= 17,346ກີບ/1ໂດລາ | | 36,996.41 | 34,769.43 |

ຜູ້ອໍານວຍການ
ລັດວິສາຫະກິດ
ນໍ້າປະປາ
ແຂວງສາລະວັນ
ທອງຈັນ ນິວໍລະຈິດ
Thongchanh NIVORACHIT



ສາທາລະນະລັດ ປະຊາທິປະໄຕ ປະຊາຊົນລາວ
ສັນຕິພາບ ເອກະລາດ ປະຊາທິປະໄຕ ເອກະພາບ ວັດທະນາຖາວອນ

===== 000 =====

ໃບລົງທະບຽນ

ທຸກປະເພດ ການກຳລັງ ກຳລັງ 25/01/2023

| ລ/ດ | ຊື່ ແລະ ນາມສະກຸນ | ຈາກພາກສ່ວນ | ຕຳແໜ່ງ | ເບີໂທລະສັບ | ລາຍເຊັນ |
|-----|------------------|------------|------------|------------|---------|
| 1 | ທ. ສິມສັກ ສິມສັກ | ນ.ປ.ປ | 59 50 | 55848207 | |
| 2 | ທ. ສິມສັກ ສິມສັກ | ນ.ປ.ປ | 400.9 | 54169224 | |
| 3 | ທ. ສິມສັກ ສິມສັກ | ນ.ປ.ປ | ທ/ນ ຂະນະນຳ | 52446156 | |
| 4 | ທ. ສິມສັກ ສິມສັກ | ນ.ປ.ປ | ທ/ນ ຂະນະນຳ | 32840007 | |
| 5 | ທ. ສິມສັກ ສິມສັກ | ນ.ປ.ປ | ທ/ນ ຂະນະນຳ | 55841104 | |
| 6 | ທ. ສິມສັກ ສິມສັກ | ນ.ປ.ປ | ທ/ນ ຂະນະນຳ | 59082660 | |
| 7 | ທ. ສິມສັກ ສິມສັກ | ນ.ປ.ປ | ທ/ນ ຂະນະນຳ | 54639351 | |
| 8 | ທ. ສິມສັກ ສິມສັກ | ນ.ປ.ປ | ວິຊາກຳລັງ | 94444641 | |
| 9 | | | | | |
| 10 | | | | | |
| 11 | | | | | |
| 12 | | | | | |
| 13 | | | | | |
| 14 | | | | | |
| 15 | | | | | |
| 16 | | | | | |
| 17 | | | | | |
| 18 | | | | | |
| 19 | | | | | |
| 20 | | | | | |